

Appendix 1

Cheshire East Council Supported Bus Service Review

Consultation Plan



Introduction

As part of the Council's medium term budget plans, a saving of £1.576 million from the supported bus service budget has been approved, commencing 1st April 2018.

In order to meet this saving, Cheshire East Council conducted a full review of the supported bus service network, prior to proposing a new "Preferred Option" network. This plan details how the Council will consult on this preferred option supported bus service network. Consultation feedback and results will then inform a final recommendation to Cabinet in Autumn 2017, which will include a final supported bus network proposed for implementation.

Timescales

It is proposed that the consultation is conducted within the following timescales from 10th April 2017 onwards, as shown on the Gantt chart below:

- Consultation preparation – 5 weeks
- Consultation live period – 10 weeks
- Consultation analysis and reporting – 10 weeks
- Report publication and consideration – 4 weeks.

	Week beginning																									
	April			May					June					July					August				September			
	10	17	24	1	8	15	22	29	5	12	19	26	3	10	17	24	31	7	14	21	28	4	11	18	25	
Consultation preparation																										
Consultation live																										
Consultation analysis																										
Report publication & consideration																										

Consultation material

All material to be consulted on to be provided by the Project Manager, with the Project Board providing advice and strategic direction. As well as detailing what the preferred option is, this material shall include sufficient reasons for the preferred option, to allow for intelligent consideration and response by all those who may be affected by the proposals, or who might wish to comment on them. Detail shall also be provided as to how the preferred option was arrived at, and what other alternatives were also considered as part of that process.

Impact Assessments

Impact Assessments have been conducted and will be published alongside this consultation.

Stakeholder mapping

The following suggests the stakeholders who will be consulted, how, and who the lead officer is for each:

Stakeholder	Consultation method	Lead
All stakeholders	Council website & online survey	RM/BB/SB
All stakeholders	Public events at 11 sites around Cheshire East	RM
Bus users	Posters to be distributed at bus stations and on buses	RM
Bus users	Paper surveys to be handed out on bus routes and at bus stations by interviewers	PC/BB
Little Bus Flexible Transport Service users	Refer to Impact Assessments	RM/BB
Bus operators	1-2-1 meetings	RM
General Public	A copy of the survey to be sent out to all members of the Council's Citizens' Panel	PC/BB
General Public	Press release / Twitter campaign	MM
Councillors / Elected Members	Member Briefings (verbal and written)	RM
Town and Parish Councils	Direct email	RM
Partner Organisations	Direct emails and via the Partnerships Newsletter	RM/TJ
Local Media	Media Release	MM
Employer Organisations	Direct emails	RM
Local schools	Direct emails	RM / BD
Local airport	Direct email	RM
Neighbouring local authorities	Direct emails	RM
Protected characteristic groups	Refer to Impact Assessments	RM

Key to initials:

RM = Rob Minton

MM = Michael Moore (Communications)

SB = Steve Bennet (Web Team)

PC = Phil Christian (Research and Consultation)

BB = Ben Buckley (Research and Consultation)

TJ = Tina Jones (Partnerships)

BD = Barbara Dale (School Organisation and Admissions)

Appendix 2

Key	Commercial service operated without any support from CEC	Commercial service, not considered as part of the Supported Bus Service Review
	Mostly commercial service with parts supported by CEC	Commercial service but with parts of service no longer supported
	All parts of service supported by CEC or other neighbouring authorities	Supported service which would be mostly/partially maintained as part of Preferred Option
		Service no longer supported

Route	Current Operation of Service	Description of Preferred Option changes from current service	Rationale for changes to service
1 Macclesfield-Black Road	Commercial service, not considered as part of the Supported Bus Service Review	Commercial service, not considered as part of the Supported Bus Service Review	Commercial service, not considered as part of review
1A, 1B Crewe-Marshfield-Nantwich	Service 1A operates as commercial service. The 1B is commercial with the exception of the diversion via Eagle Bridge Medical Centre every hour and the last bus of the day in either direction.	Service 1A operates as commercial service with service 1B diverted via Eagle Bridge Medical Centre every hour. The diverted route 1B would not be supported. Eagle Bridge Medical Centre would be served via proposed service C to maintain access.	Current route via Eagle Bridge to be served by alternative service. This route will thus just comprise the 1A route.
2 Macclesfield-Weston Estate	Commercial service, not considered as part of the Supported Bus Service Review	Commercial service, not considered as part of the Supported Bus Service Review	Commercial service, not considered as part of review
2 Macclesfield-Thornton Avenue	Commercial service, not considered as part of the Supported Bus Service Review	Commercial service, not considered as part of the Supported Bus Service Review	Commercial service, not considered as part of review
3 Macclesfield-Weston Estate	Commercial service, not considered as part of the Supported Bus Service Review	Commercial service, not considered as part of the Supported Bus Service Review	Commercial service, not considered as part of review
3 Crewe-Alsager-Hanley	Commercial service, not considered as part of the Supported Bus Service Review	Commercial service, not considered as part of the Supported Bus Service Review	Commercial service, not considered as part of review
4 Macclesfield-Upton Priory	Commercial service, not considered as part of the Supported Bus Service Review	Commercial service, not considered as part of the Supported Bus Service Review	Commercial service, not considered as part of review
5/6 Macclesfield - Weston Estate	Weekday daytimes services are provided commercially and have not been considered as part of the Supported Bus Service Review. Sunday services are supported	Weekday daytimes services are provided commercially and have not been considered as part of the Supported Bus Service Review. Sunday services would no longer be supported.	Sunday services would no longer be supported
6 Brookhouse-Leighton Hospital	Weekday daytimes services are provided commercially and have not been considered as part of the Supported Bus Service Review. Monday-Friday evening services are supported.	Weekday daytimes services are provided commercially and have not been considered as part of the Supported Bus Service Review. Monday-Friday evening services would no longer be supported.	Monday-Friday evening services would no longer be supported
8 Sydney-Crewe-Wistaston Green	Weekday daytimes services are provided commercially and have not been considered as part of the Supported Bus Service Review. Evening and Sunday services are supported.	Weekday daytimes services are provided commercially and have not been considered as part of the Supported Bus Service Review. Evening and Sunday services would no longer be supported.	Evening and Sunday services would no longer be supported
9 Macclesfield-Moss Rose	Weekday daytime services are provided commercially and have not been considered as part of the Supported Bus Service Review. Sunday services are supported.	Weekday daytimes services are provided commercially and have not been considered as part of the Supported Bus Service Review. Sunday services would no longer be supported.	Sunday services would no longer be supported
10, 10A Macclesfield-Bollington	Weekday daytimes services are provided commercially and have not been considered as part of the Supported Bus Service Review. Evening and Sunday services are supported.	Weekday daytimes services are provided commercially and have not been considered as part of the Supported Bus Service Review. Evening and Sunday services would no longer be supported.	Evening and Sunday services would no longer be supported
11 Macclesfield - Tytherington - Kerridge	All parts of service are supported	The majority of the route would be retained as part of route F. Services would route via Kerridge and Tytherington every two hours.	The route current offers good value with a relatively low level of subsidy per passenger. The route can be retained by diverting the Route F which is travelling to Macclesfield with alternative services via Kerridge and Tytherington.
12,12E Shavington-Leighton Hospital	Commercial service, not considered as part of the Supported Bus Service Review. Early Sunday morning journeys supported.	Commercial service, not considered as part of the Supported Bus Service Review. Early Sunday morning journeys would no longer be supported.	Early Sunday morning journeys would no longer be supported.
14 Macclesfield-Langley	Commercial service, not considered as part of the Supported Bus Service Review	Commercial service, not considered as part of the Supported Bus Service Review	Commercial service, not considered as part of review
19 Macclesfield - Prestbury	All parts of service are supported	Route retained as part of route A with revised timetable	Route serves a high percentage of houses with no car access and provides access to educational facilities. The service presently requires a relatively low level of subsidy per passenger.
21, 21A Macclesfield-Hurdsfield	Commercial service, not considered as part of the Supported Bus Service Review	Commercial service, not considered as part of the Supported Bus Service Review	Commercial service, not considered as part of review
27, 27A, 27B Macclesfield - Knutsford	All parts of service are supported	Route retained as part of proposed route E.	The route links into a number of educational and health facilities as well as providing access to key shopping leisure and recreation areas. The route also passes through AQMAs and passes Local Plan development sites. The service is currently well used with a relatively low cost per passenger.
31, 31A Crewe-Leighton Hospital Winsford-Northwich	Weekday daytimes services are provided commercially and have not been considered as part of the Supported Bus Service Review. Evening services are supported.	Weekday daytimes services are provided commercially and have not been considered as part of the Supported Bus Service Review. Evening services would no longer be supported.	Evening services would no longer be supported
32 Sandbach - Crewe	All parts of service are supported	Service no longer supported.	The route currently has a relatively high cost per passenger. Whilst the route does provide access to development sites and health locations, the majority of residences along the route (in Crewe and Sandbach) are served by other services and more direct alternatives between Crewe and Sandbach are available.
35 Altrincham - Warrington	All parts of service are supported	Service no longer supported.	Only a short section of the route passes through Cheshire East with just six stops on the borough. Survey data shows that the route is little used within Cheshire East and does not connect into other parts of Chehsire East.
37 Sandbach-Middlewich-Winsford-Northwich	Weekday daytimes services are provided commercially and have not been considered as part of the Supported Bus Service Review. Evening services are supported.	Weekday daytimes services are provided commercially and have not been considered as part of the Supported Bus Service Review. Evening services would no longer be supported.	Evening services would no longer be supported
37A, 37E Crewe-Sandbach-Middlewich-Winsford	Commercial service, not considered as part of the Supported Bus Service Review	Commercial service, not considered as part of the Supported Bus Service Review	Commercial service, not considered as part of review
38 Crewe-Sandbach-Congleton-Macclesfield	Weekday daytimes services are provided commercially and have not been considered as part of the Supported Bus Service Review. Evening and Sunday services are supported.	Weekday daytimes services are provided commercially and have not been considered as part of the Supported Bus Service Review. Evening and Sunday services would no longer be supported.	Evening and Sunday services would no longer be supported
39 Nantwich - Wybunbury - Crewe	All parts of service are supported	Route mostly retained as route B	The route links areas to the south of Crewe and provides access to a number of educational and health facilities. The route also provides access to a number of Local Plan development sites, points of interchange and key shopping, employment and leisure opportunities. The service does require a higher level of subsidy per passenger but the route has only been operating a relatively short period of time and has shown substantial growth in passenger numbers since commencing in Autumn 2016.
42 Crewe - Congleton	All parts of service are supported	Route mostly retained as route C with timetable and route changes	The route links into a number of educational and health facilities as well as providing access to key shopping leisure and recreation areas. The route also passes through AQMAs and passes Local Plan development sites. The service is currently well used with a relatively moderate cost per passenger.
47 High Legh - Warrington	All parts of service are supported	Service no longer supported.	The service operates twice a day on two days a week with only five stops within Cheshire East. Data shows limited usage of service within Cheshire East.

51/52/53 72/73 Nantwich - Whitchurch/Locals	All parts of service are supported	Route mostly retained as route G with timetable and route changes	This service provides links to a large number of schools as well as a large number of regional health facilities. This route also provides access to local plan development sites. Currently the service requires a relatively moderate level of subsidy per passenger which could be reduced by removing the need for a vehicle as part of the prospools.
56, 75, 79, 83, 89 Nantwich Rural Services	All parts of service are supported	Service no longer supported.	This route currently requires a high level of subsidy per passenger. The services operate on a once a week basis and whilst these routes provide access for shopping and social activities for the more rural areas, this function could be carried out by the revised Little Bus service with more focus on serving rural areas.
58 Bakewell - Buxton - Macclesfield	All parts of service are supported	Cheshire East contribution to Monday to Saturday service retained as part of a joint contribution with services 60/60A	Cheshire East Council provide a contribution to the operation of the service. This service supports local plan development sites in Macclesfield as well as supporting cross boundary links to Derbyshire. This route currently requires a low level of subsidy per passenger.
60, 60A Hayfield - Macclesfield	All parts of service are supported	Route mostly retained through joint contribution with 58 service above. Since March 2017 the service 60 would no longer serve Disley and this would continue as part of the preferred option.	Cheshire East Council provide a contribution to the operation of the service. The service provides access to health, leisure, education and recreational facilities as well as providing access to interchanges. An average of 23.1% of CE residents along the route having no access to a car. The service currently operates with a relatively low level of subsidy per passenger.
77 Congleton - Mow Cop - Kidsgrove	All parts of service are supported	Service no longer supported.	The route provides three return journeys in the morning and a single return journey in the early afternoon. The route has relatively low patronage and a high cost per passenger. Whilst the route does serve the Kidsgrove Medical Centre, the surveys show relatively few people using the 77 to travel to the centre. The service currently also serves a low proportion of residences with no access to a car.
78 Nantwich-Rode Heath (Mon-Fri)	Service operates commercially except for the following services starting from Nantwich Bus Station - 16:35, 17:25, 18:25, 19:25, 20:25 and the following services starting from Scholar Green, Stone Chair Lane - 07:20, 16:35, 18:00, 18:50 and the following service starting at Leighton Hospital - 20:51. Saturday services are also supported	Mainly commercial service, supported parts of service would no longer be supported.	Evening services would no longer be supported. Saturday services would no longer be supported due to high cost per passenger and low passenger numbers.
84 Crewe-Nantwich-Chester	Commercial service, not considered as part of the Supported Bus Service Review	Commercial service, not considered as part of the Supported Bus Service Review	Commercial service, not considered as part of review
85 Crewe-Keele-Newcastle	Commercial service, not considered as part of the Supported Bus Service Review	Commercial service, not considered as part of the Supported Bus Service Review	Commercial service, not considered as part of review
88 Knutsford - Wilmslow - Altrincham	All parts of service are supported	Route mostly retained as route E with timetable and route changes	Within Cheshire East the service provides access to a number of health, education, employment and recreational facilities. The site also serves a number of Local Plan development sites and links into interchanges. The route currently operates with a relatively low level of subsidy per passenger and carries a large number of passengers.
90/91/92 Beartown Network (Congleton)	All parts of service are supported	Route retained as route H with a similar timetable.	The services provides access within Congleton providing access to education, employment, health and shopping facilities for residents. The service currently operates with a relatively low level of subsidy per passenger.
94 Congleton-Biddulph-Newcastle	Commercial service, not considered as part of the Supported Bus Service Review	Commercial service, not considered as part of the Supported Bus Service Review	Commercial service, not considered as part of review
99 Congleton - Macclesfield	All parts of service are supported	Service no longer supported.	Accessibility within and between Congleton and Macclesfield would be maintained by alternative commercial or supported services. A high proportion of journeys made are through trips between Congleton and Macclesfield which can use these alternatives. Accessibility along the A523 part of the route is maintained by the 14, 109. The remaining section between Buglawton and Bosley along the A54 shows low patronage and would serve few destinations.
109 Macclesfield - Leek	Service wholly provided by Staffordshire CC	Service not supported by Cheshire East, not considered as part of the Supported Bus Service Review	Not a CE supported service, not considered as part of the review
130 Macclesfield-Wilmslow-Manchester	Weekday daytime services are provided commercially and have not been considered as part of the Supported Bus Service Review. Sunday services are supported.	Weekday daytimes services are provided commercially and have not been considered as part of the Supported Bus Service Review. Sunday services would no longer be supported.	Sunday services would no longer be supported
199 Manchester Airport-Stockport-Disley-Buxton	Commercial service, not considered as part of the Supported Bus Service Review	Commercial service, not considered as part of the Supported Bus Service Review	Commercial service, not considered as part of review
200 Wilmslow - Manchester Airport	All parts of service are supported	Service no longer supported.	This service currently runs at a relatively high level of subsidy per passenger due to low volumes of passengers using the service. The service provides a link between Wilmslow, Styal and Manchester Airport between which rail alternatives are available.
289 Northwich - Knutsford - Altrincham	All parts of service are supported	Knutsford to Northwich part of route retained with timetable and route changes.	The busiest part of the route would be retained through route E with accessibility maintained to other areas through other bus services. To reduce vehicle requirements, the Knutsford to Altrincham section has been routed via a more direct route losing accessibility in some areas.
300 Knutsford-Longridge (Mon-Fri)	Weekday daytimes services are provided commercially and have not been considered as part of the Supported Bus Service Review. Evening and Sunday services are supported.	The 300 operates commercially during weekdays and has not been considered in the review. Evening and Saturday services would no longer be supported.	Evening and Saturday services would no longer be supported
315 Congleton - Rode Heath	All parts of service are supported	Service no longer supported.	The connection between Alsager and Rode Heath would be retained through the commercial 78 service. The remainder of the route has low patronage.
319 Sandbach - Holmes Chapel - Goostrey	All parts of service are supported	Service no longer supported.	The service provides five round trips a day between Sandbach and Goostrey. Accessibility within Holmes Chapel would be retained through the proposed route C although Cranage and Goostrey would no longer have access to a bus service. Patronage on the existing service is relatively low. There would be an option to retain a service in these areas however this would require reducing the frequency of the proposed C route (between Crewe and Congleton via Middlewich) which carries a large number of passengers.
378 Wilmslow-Handforth-Stockport	Commercial service, not considered as part of the Supported Bus Service Review	Commercial service, not considered as part of the Supported Bus Service Review.	Commercial service, not considered as part of review.
392/3 Macclesfield - Poynton - Stockport	All parts of service are supported	Route mostly retained as part of route F with timetable and route changes	This service provides links between a large number of schools, local plan development sites and a large number of health locations. This route has a relatively low subsidy cost per passenger
P1 Poynton - Hazel Grove	All parts of service are supported	Route mostly retained as part of route F with timetable and route changes	This service provides access to a large number of schools, medical facilities as well as supporting several local plan development sites within Poynton. This service provides a relatively low subsidy cost per passenger.
SB1-3 Sandbach Town Services	All parts of service are supported	Service would no longer be supported	The withdrawal of the SB1 and SB2 services would leave the northern and eastern fringes of Sandbach over 400m from the nearest bus service (although all areas would be within 1km walking distance of a bus stop).
Crewe Flexirider	All parts of service are supported	Service would no longer be supported	Evening services no longer supported
Flexible Transport	All parts of service are supported	Proposed Flexible Transport service provision set out in Cabinet Report	Set out in Cabinet Report

Appendix 3

Cheshire East Supported Bus Services Review

Preferred Option Bus Network Pro-forma

Route reference number	A	
Status	For Consultation	
Locations linked by service	Macclesfield-Prestbury	
Peak Vehicle Requirement of Route	1	
Current service(s) partially or wholly operating this route	19	
Any differences from a current service?	Yes	
Key details of proposed service:	Weekday	Saturday
First bus start time	0730 / 0807	0820 / 0850
Last bus start time	1705 / 1750	1620 / 1650
Frequency during day	Hourly	Hourly
Seating capacity of vehicle	21	
Summary of route		
Current service 19 revised to start later and finish earlier. No change to route but one trip withdrawn at lunchtime to avoid need for relief driver		

Route A: Macclesfield-Prestbury

PVR 1

Monday to Friday

Macclesfield Bus Station	0730	0920	1020	1120	1320	1420	1520	1705
Bond Street	0733	0924	1024	1124	1324	1424	1524	1710
Chester Rd/Ivy Rd	0737	0928	1028	1128	1328	1428	1528	1715
Broken Cross	0740	0931	1031	1131	1331	1431	1531	1719
Whirley Barn Sandy Lane	0743	0934	1034	1134	1334	1434	1534	1722
St Austell Avenue	0746	0938	1038	1138	1338	1438	1538	1726
Fallibroome High School	0749	0941	1041	1141	1341	1441	1541	1729
Prestbury Hall	0753	0945	1045	1145	1345	1445	1545	1733
Prestbury, Parkhouse Drive	0756	0948	1048	1148	1348	1448	1548	1736
Lees Lane				1552
McCanns	0800							1740
McCanns							1605	1745
Lees Lane	0807
Prestbury, Parkhouse Drive	0811	0950	1050	1150	1350	1450	1610	1750
Prestbury Hall	0815	0953	1053	1153	1353	1453	1613	1753
Fallibroome High School	0819	0957	1057	1157	1357	1457	1617	1757
St Austell Avenue	0822	1000	1100	1200	1400	1500	1620	1800
Whirley Barn Sandy Lane	0825	1003	1103	1203	1403	1503	1623	1803
Broken Cross	0828	1006	1106	1206	1406	1506	1626	1806
Chester Rd/Ivy Rd	0835	1009	1109	1209	1409	1509	1629	1809
Bond Street	0843	1014	1114	1214	1414	1514	1634	1814
Macclesfield Bus Station	0848	1018	1118	1218	1418	1518	1638	1818

Saturday

Macclesfield Bus Station	0820	0920	1020	1120	1320	1420	1520	1620
Bond Street	0824	0924	1024	1124	1324	1424	1524	1624
Chester Rd/Ivy Rd	0828	0928	1028	1128	1328	1428	1528	1628
Broken Cross	0831	0931	1031	1131	1331	1431	1531	1631
Whirley Barn Sandy Lane	0834	0934	1034	1134	1334	1434	1534	1634
St Austell Avenue	0838	0938	1038	1138	1338	1438	1538	1638
Fallibroome High School	0841	0941	1041	1141	1341	1441	1541	1641
Prestbury Hall	0845	0945	1045	1145	1345	1445	1545	1645
Prestbury, Parkhouse Drive	0848	0948	1048	1148	1348	1448	1548	1648
Prestbury, Parkhouse Drive	0850	0950	1050	1150	1350	1450	1550	1650
Prestbury Hall	0853	0953	1053	1153	1353	1453	1553	1653
Fallibroome High School	0857	0957	1057	1157	1357	1457	1557	1657
St Austell Avenue	0900	1000	1100	1200	1400	1500	1600	1700
Whirley Barn Sandy Lane	0903	1003	1103	1203	1403	1503	1603	1703
Broken Cross	0906	1006	1106	1206	1406	1506	1606	1706
Chester Rd/Ivy Rd	0909	1009	1109	1209	1409	1509	1609	1709
Bond Street	0914	1014	1114	1214	1414	1514	1614	1714
Macclesfield Bus Station	0918	1018	1118	1218	1418	1518	1618	1718

Route Description

Macclesfield Bus Station, Waters Green, Queen Victoria Street, Mill Street, Park Green, Park Street, Bond Street, Catherine Street, Chester Road, Broken Cross, Whirley Road, Sandy Lane (turn round), Birtles Road, St Austell Avenue, Redruth Avenue, Birtles Road, Priory Lane, Macclesfield Road, the Village, New Road, Butley Lane, Parkhouse Drive turning circle.

Certain journeys extend to Lees lane via Butley Lanes and Bonis Hall Lane

Certain journeys extend to McCanns via Butley Lanes

Seating Capacity

21

Cheshire East Supported Bus Services Review

Preferred Option Bus Network Pro-forma

Route reference number	B	
Status	For consultation	
Locations linked by service	Crewe - Nantwich	
Peak Vehicle Requirement of Route	1	
Current service(s) partially or wholly operating this route	39	
Any differences from a current service?	No	
Key details of proposed service:	Weekday	Saturday
First bus start time	0725 / 0825	0725 / 0825
Last bus start time	1625 / 1725	1625 / 1725
Frequency during day	Two hourly	Two hourly
Seating capacity of vehicle	21	
Summary of route		
No change to route or timetable of existing 39 proposed.		

Draft Timetable**Version for consultation****Route B: Crewe - Nantwich**

PVR

1

Mondays to Saturdays

Crewe, Bus Station	0725	0925	1125	1325	1525	1725
Shavington, Dodds Bank	0737	0937	1137	1337	1537	1737
Shavington Sugar Loaf	0740	0940	1140	1340	1540	1740
Shavington The Elephant	0744	0944	1144	1344	1544	1744
Hough, Cobbs Lane Village Hall	0749	0949	1149	1349	1549	1749
Shavington, Stocks Lane	0752	0952	1152	1352	1552	1752
Wybunbury, Bridge Street, Red Lion	0756	0956	1156	1356	1556	1756
Walgherton, London Road, Boar's Head	0758	0958	1158	1358	1558	1758
London Road, First Dig Lane	0803	1003	1203	1403	1603	1803
London Road, Stapeley Gardens	0806	1006	1206	1406	1606	1806
Nantwich Bus Station	0816	1016	1216	1416	1616	1816

Nantwich Bus Station	0825	1025	1225	1425	1625
London Road, Stapeley Gardens	0835	1035	1235	1435	1635
London Road, First Dig Lane	0838	1038	1238	1438	1638
Walgherton, London Road, Boar's Head	0843	1043	1243	1443	1643
Wybunbury, Bridge Street, Red Lion	0845	1045	1245	1445	1645
Shavington, Stocks Lane	0849	1049	1249	1449	1649
Hough, Cobbs Lane Village Hall	0853	1053	1252	1452	1652
Shavington The Elephant	0858	1058	1258	1458	1658
Shavington Sugar Loaf	0902	1102	1302	1502	1702
Shavington, Dodds Bank	0905	1105	1305	1505	1705
Crewe, Bus Station	0915	1115	1315	1515	1715

Route Description

Nantwich (Bus Station), Beam Street, Millstone Lane, London Road, Newcastle Road, A51, London Road Wybunbury Road, Bridge Street, Main Road, Stocks Lane, Newcastle Road, Pit Lane, Cobbs Lane, Newcastle Road, Main Road, Crewe Road, Gresty Road, South Street, Mill Street, Oak Street, Market Street, Delamere Street, Tower Way and Crewe Bus Station

Seating Capacity

21

Cheshire East Supported Bus Services Review

Preferred Option Bus Network Pro-forma

Route reference number	C	
Status	For consultation	
Locations linked by service	Congleton-Holmes Chapel-Middlewich-Crewe	
Peak Vehicle Requirement of Route	3	
Current service(s) partially or wholly operating this route	42 and 1B	
Any differences from a current service?	Yes	
Key details of proposed service:	Weekday	Saturday
First bus start time	0655 / 0715	0725 / 0725
Last bus start time	1715 / 1715	1705 / 1705
Frequency during day	Hourly	90 minutes
Seating capacity of vehicle	35	
Summary of route		
<p>Existing 42 service revised to start later and finish earlier and reduced to every 90 minutes on a Saturday. The route has been revised within Crewe to serve Eagle Bridge Medical Centre (instead of the current 1B). The route would no longer serve Victoria Avenue or Rolls Avenue</p>		

Draft Timetable**Version for consultation**

Route C: Congleton-Holmes Chapel-Middlewich-Crewe

PVR

3

Mondays to Friday

Congleton Fairground	0655	0750	0925	1025	1125	1225	1325	1455	1525	1715
West Heath, Delamere Road	0707	0802	0937	1037	1137	1237	1337	1507	1537	1727
Somerford	0711	0806	0941	1041	1141	1241	1341	1511	1541	1731
Holmes Chapel. London Road	0720	0820	0950	1050	1150	1250	1350	1520	1550	1740
Centurion Way	0727	0827	0957	1057	1157	1257	1357	1527	1557	1747
Middlewich, Bull Ring	0737	0837	1007	1107	1207	1307	1407	1537	1607	1757
Cleddford, Turnpike	0743	0843	1013	1113	1213	1313	1413	1543	1613	1803
Manor Park, Long Lane	0747	0847	1017	1117	1217	1317	1417	1547	1617	1807
Leighton Hospital	0802	0902	1032	1132	1232	1332	1432	1602	1632	1822
Minshull New Road, Rolls Avenue	0806	0906	1036	1136	1236	1336	1436	1606	1636	1826
Morrisons, Bus Shelter	0812	0912	1042	1142	1242	1342	1442	1612	1642	1832
Eagle Bridge Medical Centre	0816	0916	1046	1146	1246	1346	1446	1616	1646	1846
Crewe, Bus Station	0821	0921	1051	1151	1251	1351	1451	1621	1651	1851

Crewe, Bus Station

Crewe, Bus Station	0715	0855	0955	1055	1155	1255	1355	1455	1625	1715
Eagle Bridge Medical Centre	0720	0900	1000	1100	1200	1300	1400	1500	1630	1720
Morrisons, Bus Shelter	0724	0904	1004	1104	1204	1304	1404	1504	1634	1724
Minshull New Road, Rolls Avenue	0729	0909	1009	1109	1209	1309	1409	1509	1639	1729
Leighton Hospital	0735	0915	1015	1115	1215	1315	1415	1515	1645	1735
Manor Park, Long Lane	0750	0930	1030	1130	1230	1330	1430	1530	1700	1750
Cleddford, Turnpike	0755	0935	1035	1135	1235	1335	1435	1535	1705	1755
Middlewich, Bull Ring	0810	0944	1044	1144	1244	1344	1444	1544	1714	1809
Centurion Way	0817	0949	1049	1149	1249	1349	1449	1549	1719	1814
Holmes Chapel. London Road	0826	0956	1056	1156	1256	1356	1456	1556	1726	1821
Somerford	0832	1002	1102	1202	1302	1402	1502	1602	1732	1827
West Heath, Delamere Road	0840	1006	1106	1206	1306	1406	1506	1606	1736	1831
Congleton Fairground	0855	1018	1118	1218	1318	1418	1518	1618	1748	1843

Saturday**Congleton Fairground**

Congleton Fairground	0725	0925	1055	1225	1355	1525	1705
West Heath, Delamere Road	0737	0937	1107	1237	1407	1537	1717
Somerford	0741	0941	1111	1241	1411	1541	1721
Holmes Chapel. London Road	0750	0950	1120	1250	1420	1550	1730
Centurion Way	0757	0957	1127	1257	1427	1557	1737
Middlewich, Bull Ring	0807	1007	1137	1307	1437	1607	1747
Cleddford, Turnpike	0813	1013	1143	1313	1443	1613	1753
Manor Park, Long Lane	0817	1017	1147	1317	1447	1617	1757
Leighton Hospital	0832	1032	1202	1332	1502	1632	1812
Minshull New Road, Rolls Avenue	0836	1036	1206	1336	1506	1636	1816
Morrisons, Bus Shelter	0842	1042	1212	1342	1512	1642	1822
Eagle Bridge Medical Centre	0846	1046	1216	1346	1516	1646	1826
Crewe, Bus Station	0851	1051	1221	1351	1521	1651	1831

Crewe, Bus Station

Crewe, Bus Station	0725	0925	1055	1225	1355	1525	1705
Eagle Bridge Medical Centre	0730	0930	1100	1230	1400	1530	1710
Morrisons, Bus Shelter	0734	0934	1104	1234	1404	1534	1714
Minshull New Road, Rolls Avenue	0739	0939	1109	1239	1409	1539	1719
Leighton Hospital	0745	0945	1115	1245	1415	1545	1725
Manor Park, Long Lane	0800	1000	1130	1300	1430	1600	1740
Cleddford, Turnpike	0805	1005	1135	1305	1435	1605	1745
Middlewich, Bull Ring	0814	1014	1144	1314	1444	1614	1754
Centurion Way	0819	1019	1149	1319	1449	1619	1759
Holmes Chapel. London Road	0826	1026	1156	1326	1456	1626	1806
Somerford	0832	1032	1202	1332	1502	1632	1812
West Heath, Delamere Road	0836	1036	1206	1336	1506	1636	1816
Congleton Fairground	0848	1048	1218	1348	1518	1648	1828

Route Description

Congleton Fairground (Bus Station), Market Street, Mountbatten Way, Mill Street, Swan Bank, West Street (return via West Street, Antrobus Street and Mill Street), West Road, Holmes Chapel Road, Cumberland Road, Longdown Road, Chestnut Drive, Sycamore Avenue, Longdown Road, Delamere Road, Holmes Chapel Road, Marsh Lane, Manor Lane, Macclesfield Road, London Road, Chester Road, Middlewich Road, Holmes Chapel Road, Centurion Way, King Street, Kinderton Street, St.Michaels Way, Bull Ring, St.Michaels Way, Leadsmythy Street, Lewin Street, Booth Lane, Elm Road, Long Lane South, Warringham Lane, Chadwick Road, Sutton Lane, Long Lane, Hayhurst Avenue, Brynlow Drive, Nantwich Road, Middlewich Road, Smithy Lane, Leighton Hospital, Smithy Lane, Minshull New Road, West Street, Dunwoody Way, Morrisons Store, Dunwoody Way, Wistaston Road, Market Street, Delamere Street, Tower Way, Crewe (Bus Station)

Seating Capacity

35

Cheshire East Supported Bus Services Review

Preferred Option Bus Network Pro-forma

Route reference number	D1, D2	
Status	For consultation	
Locations linked by service	Macclesfield-New Mills-Hayfield; Macclesfield-Buxton	
Peak Vehicle Requirement of Route	-	
Current service(s) partially or wholly operating this route	58 and 60	
Any differences from a current service?	No	
Key details of proposed service:	Weekday	Saturday
First bus start time	0636 / 0710; 0615 / 0655	0636 / 0710; 0615 / 0655
Last bus start time	1804 / 1845; 1805 / 1845	1804 / 1845; 1805 / 1845
Frequency during day	Hourly; Hourly	Hourly; Hourly
Seating capacity of vehicle	-	
Summary of route		
No changes proposed to existing 58 and 60 services which are managed by Derbyshire CC		

Draft Timetable**Version for consultation****XB Contract****Route D1 Macclesfield-New Mills-Hayfield****Monday to Saturday**

										SSH	SCD				NS
Macclesfield, Bus Station	0710	0812	0850	0950	1050	1150	1250	1350	1450	1450	1550	1700	1750	1845	
Hurdsfield, Church	0717	0819	0857	0957	1057	1157	1257	1357	1457	1457	1557	1707	1757	1850	
Kerridge Rd Junction	0720	0822	0900	1000	1100	1200	1300	1400	1500	1500	1600	1710	1800	1853	
Rainow, Mount Pleasant	0722	0824	0902	1002	1102	1202	1302	1402	1502	1502	1602	1712	1802	1855	
Rainow, Smithy La	0724	0828	0904*	1004*	1104*	1204*	1304*	1404*	1504*	1504*	1604*	1714	1804	1857	
The Highwayman	0728		0908	1008	1108	1208	1308	1408	1508	1508	1608	1718	1808	1901	
Charles Head	0730		0910	1010	1110	1210	1310	1410	1510	1510	1610	1720	1810	1903	
Kettleshulme	0733		0913	1013	1113	1213	1313	1413	1513	1513	1613	1723	1813	1906	
Taxal	0727		0917	1017	1117	1217	1317	1417	1517	1517	1617	1727	1817	1910	
Horwich End, White Horse	0740		0920	1020	1120	1220	1320	1420	1520	1520	1620	1730	1820	1912	
Stoneheads				1027		1227		1427							
Whaley Bridge, Rail Station	0742		0922	1032	1122	1232	1322	1432	1522	1522	1622	1732	1822	1914	
Whaley Bridge, Tesco	0745		0925	1035	1125	1235	1325	1435	1525	1525	1625	1735	1825		
Newtown, Old Post Office	0751		0931	1041	1131	1241	1331	1441	1531	1531	1631	1741	1831		
New Mills, Bus Station arr	0754		0934	1044	1134	1244	1334	1444	1534	1534	1634	1744	1834		
New Mills School										1537					
Low Leighton, Ollersset View										1541					
Bridge Street/Stafford Street	0758		0938		1138		1338		1538		1638				
Thornsett Printers Arms	0800		0940		1140		1340		1540	1547	1640				
Birch Vale, Grouse Hotel	0802		0942		1142		1342		1542	1549	1642				
Hayfield, Bus Station	0805		0945		1145		1345		1545	1552	1645				

				SSH	SCD										NS
Hayfield, Bus Station	0714		0810	0810	0850	0950		1150		1350		1600	1650		
Birch Vale, Grouse Hotel	0717		0813	0813	0853	0953		1153		1353		1603	1653		
Thornsett Printers Arms	0719		0815	0815	0855	0955		1155		1355		1605	1655		
Bridge Street/Stafford Street	0722		0819		0859	0959		1159		1359		1609	1659		
Low Leighton, Ollersset View				0821											
New Mills School				0822											
New Mills, Bus Station	0728		0824	0825	0904	1004	1054	1204	1254	1404	1454	1614	1704	1804	
Newtown, Rail Station	0731				0907	1007	1057	1207	1257	1407	1457	1617	1707	1807	
Whaley Bridge, Tesco	0737				0913	1013	1103	1213	1303	1413	1503	1623	1713	1813	
Whaley Bridge, Rail Station	0636	0740			0916	1016	1106	1216	1306	1416	1506	1626	1716	1816	
Stoneheads							1111		1311		1511				
Horwich End, White Horse	0639	0742			0919	1019	1119	1219	1319	1419	1519	1629	1719	1818	
Taxal	0942	0745			0922	1022	1122	1222	1322	1422	1522	1632	1722	1820	
Kettleshulme	0646	0749			0926	1026	1126	1226	1326	1426	1526	1636	1726	1824	
Charles Head	0649	0752			0929	1029	1129	1229	1329	1429	1529	1639	1729	1826	
The Highwayman	0651	0754			0931*	1031*	1131*	1231*	1331*	1431*	1531	1641*	1731	1828	
Rainow, Smithy La	0655	0758	0828		0935	1035	1135	1235	1335	1435	1535	1645	1735	1832	
Rainow, Mount Pleasant	0657	0800	0830		0937	1037	1137	1237	1337	1437	1537	1647	1737	1834	
Kerridge Rd Junction	0659	0802	0832		0939	1039	1139	1239	1339	1439	1539	1649	1739	1836	
Hurdsfield, Church	0700	0804	0833		0940	1040	1140	1240	1340	1440	1540	1650	1740	1837	
Macclesfield, Bus Station	0705	0810	0845		0945	1045	1145	1245	1345	1445	1545	1655	1745	1841	

Codes NS Not Saturday SCD Schooldays Only SSH Saturday & Schoolholidays

* Operated via Blue Boar on request

Cheshire East

XB Contract**Route D2****Macclesfield-Buxton****Monday-Saturday**

	NS										NS				
Macclesfield Bus Station	0655	0815	0915	1015	1115	1215	1315	1415	1515	1615	1715	1745	1845		
Forest Cottage	0702	0822	0922	1022	1122	1222	1322	1422	1522	1622	1722	1752	1852		
Cat & Fiddle	0713	0833	0933	1033	1133	1233	1333	1433	1533	1633	1733	1803	1900		
Burbage Leek Road	0719	0839	0939	1039	1139	1239	1339	1439	1539	1639	1739	1809	1906		
Burbage Level Lane	0721	0841	0941	1041	1141	1241	1341	1441	1541	1641	1741	1811	1908		
Buxton Market Place	0728	0848	0948	1048	1148	1248	1348	1448	1548	1648	1748	1818	1915		
Buxton Sylvan Park	0731		0951		1151		1351		1551	1651	1751	1821	1918		
	NS	NS	SO												
Buxton Sylvan Park	0615	0732	0735	0835	0925	1025	1125	1225	1325	1425	1525	1625	1705	1805	
Buxton Market Place	0618	0738	0738	0838	0928	1028	1128	1228	1328	1428	1528	1628	1708	1808	
Burbage Level Lane	0625	0745	0745	0845	0935	1035	1135	1235	1335	1435	1535	1635	1715	1815	
Burbage Leek Road	0628	0748	0748	0848	0938	1038	1138	1238	1338	1438	1538	1638	1718	1818	
Cat & Fiddle	0634	0754	0754	0854	0944	1044	1144	1244	1344	1444	1544	1644	1724	1824	
Forest Cottage	0643	0803	0803	0903	0953	1053	1153	1253	1353	1453	1553	1653	1733	1833	
Macclesfield Bus Station	0650	0810	0810	0910	1000	1100	1200	1300	1400	1500	1600	1700	1740	1840	

Codes NS Not Saturdays SO Saturday Only

Cheshire East Supported Bus Services Review

Preferred Option Bus Network Pro-forma

Route reference number	E1, E2	
Status	For consultation	
Locations linked by service	Altrincham-Wilmslow-Mobberley-Knutsford-Macclesfield; Altrincham-Wilmslow-Mobberley-Knutsford-Northwich	
Peak Vehicle Requirement of Route	4	
Current service(s) partially or wholly operating this route	27, 88 and 188, 289	
Any differences from a current service?	Yes	
Key details of proposed service:	Weekday	Saturday
First bus start time	0700 / 0638	0735 / 0752
Last bus start time	1835 / 1845	1735 / 1845
Frequency during day	See summary	See summary
Seating capacity of vehicle	35	
Summary of route		
<p>The current 88 service between Altrincham and Knutsford is reduced to hourly frequency, with all journeys serving Morley Green. Alternative services extend to Macclesfield and Northwich every two hours to replace the 27 and 289.</p>		

Draft Timetable

Version for consultation

Route E1 Altrincham-Wilmslow-Mobberley-Knutsford-Macclesfield
Route E2 Altrincham-Wilmslow-Mobberley-Knutsford-Northwich

PVR

4

Monday to Friday (except Public Holidays)

SCD

Altrincham Interchange Stand C		0715		0845	0945	1045	1145	1245	1345	1445	1545	1645	1745	1845
Halebarns Hale Road/Rydal Drive		0725		0855	0955	1055	1155	1255	1355	1455	1555	1655	1755	1855
Morley Green Church		0737		0907	1007	1107	1207	1307	1407	1507	1607	1707	1807	1907
Wilmslow Bank Square Stop A		0747		0917	1017	1117	1217	1317	1417	1517	1617	1717	1817	1917
Wilmslow Bank Square Stop A	0700	0750		0920	1020	1120	1220	1320	1420	1520	1620	1720	1820	
Wilmslow Rail Station	0703	0754		0924	1024	1124	1224	1324	1424	1524	1624	1724	1824	
Knolls Green, Bird In Hand	0716	0807		0937	1037	1137	1237	1327	1427	1527	1637	1737	1837	
Small Lane Pepper Street			0805											
Hobcroft Lane Slade Lane			0808											
Mobberley CE Primary School			0813											
Mobberley Town Lane/Bucklow Ave	0721	0811	0818		0941	1041	1141	1241	1341	1441	1541	1641	1741	1841
Knutsford Bus Station Stand 3	0730	0820	0825		0950	1050	1150	1250	1350	1450	1550	1650	1750	1850
Knutsford Bus Station Stand 3		0745	0825	0852	0952	1052	1152	1252	1352		1552	1652	1752	
Knutsford Academy			0830											
Tabley Windmill				0859		1059		1259		1559		1759		
Pickmere, Red Lion				0905		1105		1305		1605		1805		
Wincham, Raynors Lane				0908		1108		1308		1608		1808		
Lostock Gralam, Langford Road				0913		1113		1313		1613		1813		
Lostock Gralam, Crossroads				0918		1118		1318		1618		1818		
Northwich Railway Station				0923		1123		1323		1623		1823		
Northwich, Watling Street				0928		1128		1328		1628		1828		
Knutsford Railway Station		0747				1154		1354		1654				
Beggermans Lane				0954										
Ollerton, Post Office		0752				1159		1359		1659				
Whipping Stocks Inn		0754			1001	1201		1401		1701				
Over Peover, Gate Inn		0758			1005	1205		1405		1705				
Chelford, Station Road		0802			1009	1209		1409		1709				
Monks Heath, Traffic Lights		0806			1013	1213		1413		1713				
Macclesfield, Broken Cross		0810			1017	1217		1417		1717				
Macclesfield General Hospital		0814			1019	1219		1419		1719				
Churchill Way		0821			1026	1226		1426		1726				
Macclesfield Bus Station		0825			1030	1230		1430		1730				

SCD

Macclesfield Bus Station		0710		0830		1055		1255		1455		1735		
Churchill Way		0715		0835		1100		1300		1500		1740		
Macclesfield General Hospital		0719		0839		1104		1304		1504		1744		
Macclesfield, Broken Cross		0721		0841		1106		1306		1506		1746		
Monks Heath, Traffic Lights		0725		0845		1110		1310		1510		1750		
Chelford, Station Road		0729		0849		1114		1314		1514		1754		
Over Peover, Gate Inn		0733		0853		1118		1318		1518		1758		
Whipping Stocks Inn		0735		0855		1120		1320		1520		1800		
Ollerton, Post Office		0740		0900		1125				1525		1805		
Beggermans Lane								1325						
Knutsford Rail Station		0744		0904		1129				1529		1810		
Northwich Watling Street	0705					0955		1155		1355		1655		
Northwich Railway Station	0709					0959		1159		1359		1659		
Lostock Gralam, Crossroads	0714					1004		1204		1404		1704		
Lostock Gralam, Langford Road	0718					1008		1208		1408		1708		
Wincham Raynors lane	0723					1013		1213		1413		1713		
Pickmere, Red Lion	0726					1016		1216		1416		1716		
Tabley Windmill	0733					1023		1223		1423		1723		
Knutsford Academy										1530				
Knutsford Bus Station Stand 3	0740	0746		0906		1031	1131	1231	1331	1431	1535	1531	1731	1812
Knutsford Bus Station Stand 3			0735	0835		0935	1035	1135	1235	1335	1435	1535	1635	1735
Mobberley Town Lane/Bucklow Ave			0744	0844		0944	1044	1144	1244	1344	1444	1542	1544	1644
Mobberley CE Primary School												1547		
Hobcroft Lane Slade Lane												1552		
Small Lane Pepper Street												1555		
Knolls Green, Bird In Hand			0748	0848		0948	1048	1148	1248	1348	1448	1548	1648	1748
Wilmslow Rail Station			0800	0900		1000	1100	1200	1300	1400	1500	1600	1700	1800
Wilmslow Bank Square Stop B			0804	0904		1004	1104	1204	1304	1404	1504	1604	1704	1804
Wilmslow Bank Square Stop B	0638		0808	0908		1008	1108	1208	1308	1408	1508	1608	1708	1808
Morley Green Church	0648		0818	0918		1018	1118	1218	1318	1418	1518	1618	1718	1818
Halebarns Hale Road/Rydal Drive	0700		0830	0930		1030	1130	1230	1330	1430	1530	1630	1730	1830
Altrincham Interchange Stand C	0710		0840	0940		1040	1140	1240	1340	1440	1540	1640	1740	1840

Saturdays

Altrincham Interchange Stand C	0745	0845	0945	1045	1145	1245	1345	1445	1545	1645	1745			
Halebarns Hale Road/Rydal Drive	0755	0855	0955	1055	1155	1255	1355	1455	1555	1655	1755			
Morley Green Church	0807	0907	1007	1107	1207	1307	1407	1507	1607	1707	1807			
Wilmslow Bank Square Stop A	0817	0917	1017	1117	1217	1317	1417	1517	1617	1717	1817			
Wilmslow Bank Square Stop A	0821	0921	1021	1121	1221	1321	1421	1521	1621	1721	1821			
Wilmslow Rail Station	0824	0924	1024	1124	1224	1324	1424	1524	1624	1724	1824			
Knolls Green, Bird In Hand	0837	0937	1037	1137	1237	1327	1427	1527	1637	1737	1837			
Small Lane Pepper Street														
Hobcroft Lane Slade Lane														
Mobberley CE Primary School														
Mobberley Town Lane/Bucklow Ave	0841	0941	1041	1141	1241	1341	1441	1541	1641	1741	1841			
Knutsford Bus Station Stand 3	0850	0950	1050	1150	1250	1350	1450	1550	1650	1750	1850			
Knutsford Bus Station Stand 3	0752	0852	0952	1052	1152	1252	1352	1452	1552	1652				
Tabley Windmill		0859		1059		1259		1459		1659				
Pickmere, Red Lion		0903		1103		1303		1503		1703				
Wincham, Raynors Lane		0908		1108		1308		1508		1708				
Lostock Gralam, Langford Road		0913		1113		1313		1513		1713				
Lostock Gralam, Crossroads		0918		1118		1318		1518		1718				
Northwich Railway Station		0923		1123		1323		1523		1723				
Northwich, Watling Street		0928		1128		1328		1528		1728				
Knutsford Bus Station														
Knutsford Railway Station	0754			1154		1354		1554						
Beggermans Lane			0954											
Ollerton, Post Office	0759			1159		1359		1559						
Whipping Stocks Inn	0801		1001	1201		1401		1601						
Over Peover, Gate Inn	0805		1005	1205		1405		1605						
Chelford, Station Road	0809		1009	1209		1409		1609						
Monks Heath, Traffic Lights	0813		1013	1213		1413		1613						
Macclesfield, Broken Cross	0817		1017	1217		1417		1617						
Macclesfield General Hospital	0819		1019	1219		1419		1619						
Churchill Way	0826		1026	1226		1426		1626						
Macclesfield Bus Station	0830		1030	1230		1430		1630						

Macclesfield Bus Station	0855		1055		1255		1455		1655
Churchill Way	0900		1100		1300		1500		1700
Macclesfield General Hospital	0904		1104		1304		1504		1704
Macclesfield, Broken Cross	0906		1106		1306		1506		1706
Monks Heath, Traffic Lights	0910		1110		1310		1510		1710
Chefford, Station Road	0914		1114		1314		1514		1714
Over Peover, Gate Inn	0918		1118		1318		1518		1718
Whipping Stocks Inn	0920		1120		1320		1520		1720
Ollerton, Post Office	0925		1125				1525		1725
Beggermans Lane					1325				
Knutsford Rail Station	0929		1129				1529		1729
Northwich Watling Street	0755		0955		1155		1355		1555
Northwich Railway Station	0759		0959		1159		1359		1559
Lostock Gralam, Crossroads	0804		1004		1204		1404		1604
Lostock Gralam, Langford Road	0808		1008		1208		1408		1608
Wincham Rayners lane	0813		1013		1213		1413		1613
Pickmere, Red Lion	0816		1016		1216		1416		1616
Tabley Windmill	0823		1023		1223		1423		1623
Knutsford Bus Station Stand 3	0831	0931	1031	1131	1231	1331	1431	1531	1631
Knutsford Bus Station Stand 3	0735	0835	0935	1035	1135	1235	1335	1435	1535
Mobberley Town Lane/Bucklow Ave	0744	0844	0944	1044	1144	1244	1344	1444	1544
Mobberley CE Primary School									
Hobcroft Lane Slade Lane									
Small Lane Pepper Street									
Knolls Green, Bird In Hand	0748	0848	0948	1048	1148	1248	1348	1448	1548
Wilmslow Rail Station	0800	0900	1000	1100	1200	1300	1400	1500	1600
Wilmslow Bank Square Stop B	0804	0904	1004	1104	1204	1304	1404	1504	1604
Wilmslow Bank Square Stop B	0808	0908	1008	1108	1208	1308	1408	1508	1608
Morley Green Church	0818	0918	1018	1118	1218	1318	1418	1518	1618
Halebarns Hale Road/Rydal Drive	0830	0930	1030	1130	1230	1330	1430	1530	1630
Altrincham Interchange Stand C	0840	0940	1040	1140	1240	1340	1440	1540	1640

Route Description

Northwich

Outward

Altrincham Interchange, Stamford New Road, Railway Street, Ashley Road, Hale Road, Hale Road, Wilmslow Road, Altrincham Road, Morley Green Road, Mobberley Road, Altrincham Road, Water Lane, Alderley Road, Green Lane, Swan Street, Station Road, Wilmslow Rail Station, Station Road, Manchester Road, Alderley Road, Bedells Lane, Chapel Lane, Moor Lane, Cumber Lane, Gravel Lane, Knutsford Road, Hall Lane, Town Lane, Knutsford Road, Mobberley Road, Manor Park North, Thorneyholme Drive, Mobberley Road, Hollow Lane, Brook Street, Adams Hill, Toft Road, Stanley Road, Bexton Road and Knutsford Bus Station, Northwich Road, Chester Road, B5391, Pickmere, Hall Lane, Townshend Road, Fryer Road, Station Road, Chesterway, Witton Street, Old Warrington Road Road, Albion Road, Venables Road, Chesterway, A533, Northwich Watling Street

Return

Northwich Watling Street, Chesterway, Meadow Street, Witton Street, Venables Road, Albion Road, Old Warrington Road, Witton Street, Chesterway, Station Road, Manchester Road, Fryer Road, Townshend Road, Hall Lane, B5391, Pickmere, Chester Road, Northwich Road, Knutsford Bus Station, Bexton Road, Toft Road then as reverse of outward route to Chapel Lane then Alderley Road, Manchester Road, Station Road, Wilmslow Rail Station, Station Road, Swan Street, Green Lane, Alderley Road, Water Lane then as reverse of outward route to Stamford New Road and Altrincham Interchange

Route Description

Macclesfield

Outward

Altrincham Interchange, Stamford New Road, Railway Street, Ashley Road, Hale Road, Hale Road, Wilmslow Road, Altrincham Road, Morley Green Road, Mobberley Road, Altrincham Road, Water Lane, Alderley Road, Green Lane, Swan Street, Station Road, Wilmslow Rail Station, Station Road, Manchester Road, Alderley Road, Bedells Lane, Chapel Lane, Moor Lane, Cumber Lane, Gravel Lane, Knutsford Road, Hall Lane, Town Lane, Knutsford Road, Mobberley Road, Manor Park North, Thorneyholme Drive, Mobberley Road, Hollow Lane, Brook Street, Adams Hill, Toft Road, Stanley Road, Bexton Road and Knutsford Bus Station, Bexton Road, Stanley Road, Adams Hill Brook Street, Chefford Road, A537, Ollerton, Seven Sisters Lane, A50, Whipping Stocks, Over Peover, Well Bank Lane, Mill Lane, Pepper Street, A537, Chefford Road, Broken Cross, Fallibroome Road, Victoria Road, Macclesfield Hospital (Out), Victoria Road, Prestbury Road, Cumberland Street, Chester Road, Chestergate, Churchill Way, Park Green, Sunderland Street, Queen Victoria Street, Macclesfield Bus Station.

Return

Macclesfield Bus Station via Mill Street, Park Street, Churchill Way, King Edward Street, Chester Road, Cumberland Street, Prestbury Road, Victoria Road, Macclesfield Hospital(out), Victoria Road, Fallibroome Road, Broken Cross, Chefford Road, A537, Pepper Street, Mill Lane, Well Bank Lane, Over Peover, Whipping Stocks, A50 Holmes Chapel Road, Seven Sisters Lane, Ollerton, A537 Chefford Road, Brook Street, Adams Hill, Stanley Road, Bexton Road, Knutsford Bus Station, Bexton Road, Toft Road then as reverse of outward route to Chapel Lane then Alderley Road, Manchester Road, Station Road, Wilmslow Rail Station, Station Road, Swan Street, Green Lane, Alderley Road, Water Lane then as reverse of outward route to Stamford New Road and Altrincham Interchange

Seating Capacity

35

Cheshire East Supported Bus Services Review

Preferred Option Bus Network Pro-forma

Route reference number	F	
Status	For consultation	
Locations linked by service	Macclesfield-Bollington/Kerridge-Poynton-Hazel Grove	
Peak Vehicle Requirement of Route	2	
Current service(s) partially or wholly operating this route	11, 392 and P1	
Any differences from a current service?	Yes	
Key details of proposed service:	Weekday	Saturday
First bus start time	0715 / 0715	0815 / 0815
Last bus start time	1715 / 1715	1715 / 1715
Frequency during day	Hourly	Hourly
Seating capacity of vehicle	21	
Summary of route		
<p>The service would operate hourly. At the northern extent of the route the service would terminate at Hazel Grove (Park & Ride) for onwards connections. The route would continue to Poynton and follow a similar route to the P1 within Poynton to serve Middlewood. Between Macclesfield and Bollington the route would be similar to the current 11 although alternate journeys would serve Dorchester Way and Bollington (Crossfield Road) or Badger Road and Kerridge (each served every two hours).</p>		

Draft Timetable**Version for consultation****Route F Macclesfield-Poynton-Hazel Grove**

PVR 2

Monday-Friday

Macclesfield, Bus Station	0715	0815	0915	1015	1115	1215	1315	1415	1515	1615	1715
Tytherington Badger Road		0822		1022		1222		1422		1622	
Tytherington, Dorchester Way	0722		0922		1122		1322		1522		1722
South West Avenue/Crossfield Road	0730		0930		1130		1330		1530		1730
Kerridge Bulls Head		0830		1030		1230		1430		1630	
Bollington, Turners Arms	0737	0837	0937	1037	1137	1237	1337	1437	1537	1637	1737
Four Lane Ends, Miners Arms	0748	0848	0948	1048	1148	1248	1348	1448	1548	1648	1748
Middlewood Green Lane	0756	0856	0956	1056	1156	1256	1356	1456	1556	1656	1756
Hockley Post Office	0800	0900	1000	1100	1200	1300	1400	1500	1600	1700	1800
Poynton, Greymarsh Drive	0805	0905	1005	1105	1205	1305	1405	1505	1605	1705	1805
Poynton, Church	0808	0908	1008	1108	1208	1308	1408	1508	1608	1708	1808
Hazel Grove, Park & Ride	0812	0912	1012	1112	1212	1312	1412	1512	1612	1712	1812
	392	392	391	392	391	392	391	392	391	392	391
Hazel Grove, Park & Ride	0715	0815	0915	1015	1115	1215	1315	1415	1515	1615	1715
Poynton, Church	0719	0819	0919	1019	1119	1219	1319	1419	1519	1619	1719
Poynton, Greymarsh Drive	0722	0822	0922	1022	1122	1222	1322	1422	1522	1622	1722
Hockley Post Office	0727	0827	0927	1027	1127	1227	1327	1427	1527	1627	1727
Middlewood Green Lane	0731	0831	0931	1031	1131	1231	1331	1431	1531	1631	1731
Four Lane Ends, Miners Arms	0739	0839	0939	1039	1139	1239	1339	1439	1539	1639	1739
Bollington, Turners Arms	0750	0850	0950	1050	1150	1250	1350	1450	1550	1650	1750
Kerridge Bulls Head			0957		1157		1357		1557		1757
South West Avenue/Crossfield Road	0757	0857		1057		1257		1457		1657	
Tytherington, Dorchester Way	0805	0905		1105		1305		1505		1705	
Tytherington, Badger Road			1005		1205		1405		1605		1805
Macclesfield, Bus Station	0812	0912	1012	1112	1212	1312	1412	1512	1612	1712	1812

Saturday

Macclesfield, Bus Station	0815	0915	1015	1115	1215	1315	1415	1515	1615	1715
Tytherington Badger Road	0822		1022		1222		1422		1622	
Tytherington, Dorchester Way		0922		1122		1322		1522		1722
South West Avenue/Crossfield Road		0930		1130		1330		1530		1730
Kerridge Bulls Head	0830		1030		1230		1430		1630	
Bollington, Turners Arms	0837	0937	1037	1137	1237	1337	1437	1537	1637	1737
Four Lane Ends, Miners Arms	0848	0948	1048	1148	1248	1348	1448	1548	1648	1748
Middlewood Green Lane	0856	0956	1056	1156	1256	1356	1456	1556	1656	1756
Hockley Post Office	0900	1000	1100	1200	1300	1400	1500	1600	1700	1800
Poynton, Greymarsh Drive	0905	1005	1105	1205	1305	1405	1505	1605	1705	1805
Poynton, Church	0908	1008	1108	1208	1308	1408	1508	1608	1708	1808
Hazel Grove, Park & Ride	0912	1012	1112	1212	1312	1412	1512	1612	1712	1812
	392	391	392	391	392	391	392	391	392	391
Hazel Grove, Park & Ride	0815	0915	1015	1115	1215	1315	1415	1515	1615	1715
Poynton, Church	0819	0919	1019	1119	1219	1319	1419	1519	1619	1719
Poynton, Greymarsh Drive	0822	0922	1022	1122	1222	1322	1422	1522	1622	1722
Hockley Post Office	0827	0927	1027	1127	1227	1327	1427	1527	1627	1727
Middlewood Green Lane	0831	0931	1031	1131	1231	1331	1431	1531	1631	1731
Four Lane Ends, Miners Arms	0839	0939	1039	1139	1239	1339	1439	1539	1639	1739
Bollington, Turners Arms	0850	0950	1050	1150	1250	1350	1450	1550	1650	1750
Kerridge Bulls Head		0957		1157		1357		1557		1757
South West Avenue/Crossfield Road	0857		1057		1257		1457		1657	
Tytherington, Dorchester Way	0905		1105		1305		1505		1705	
Tytherington, Badger Road		1005		1205		1405		1605		1805
Macclesfield, Bus Station	0912	1012	1112	1212	1312	1412	1512	1612	1712	1812

Route Description

Macclesfield Bus Station, Mill Street, Mill Lane, Silk Road, Beech Lane, Manchester Road, Badger Road, Brocklehurst Way, Silk Road, Bollington Road, Clark Lane, Oak Road, Kerridge Bulls Head, Jacksons Lane, Grimshaw Lane, Wellington Road, Palmerston Street, Shrigley Road, Brookledge Lane, Wood Lane South, Wood Lane West, Moggie Lane, Dickens Lane, Waterloo Road, Coppice Road, Shrigley Road North, Green Lane, Spring Bank Lane, Roundy Lane, Pedley Hill, Middlewood Road, Park Lane, Bulkeley Road, Clumber Road, Dickens Lane, Vernon Road, Copperfield Road, Dickens Lane

London Road North, Hazel Grove Park & Ride

Return as reverse of outward route to the Silk Road then Sunderland Street, Queen Victoria Street to Macclesfield Bus Station

Route Description

Macclesfield Bus Station, Mill Street, Mill Lane, Silk Road, Beech Lane, Manchester Road, Dorchester Way, Manchester Road, Tytherington Lane, Bollington Road, Princess Road, Heath Road, Crossfield Road, South West Avenue, Henshall Road, Palmerston Street, Shrigley Road, Brookledge Lane, Wood Lane South, Wood Lane West, Moggie Lane, Dickens Lane, Waterloo Road, Coppice Road, Shrigley Road North, Green Lane, Spring Bank Lane, Roundy Lane, Pedley Hill, Middlewood Road, Park Lane, Bulkeley Road, Clumber Road, Dickens Lane, Vernon Road, Copperfield Road, Dickens Lane

Return as reverse of outward route to the Silk Road then Sunderland Street, Queen Victoria Street to Macclesfield Bus Station

Seating Capacity

21

Cheshire East Supported Bus Services Review

Preferred Option Bus Network Pro-forma

Route reference number	G1, G2, G3, G4, G5, G6	
Status	For consultation	
Locations linked by service	Nantwich-Wrenbury Circular; Nantwich-Wrenbury Circular;	
Peak Vehicle Requirement of Route	2	
Current service(s) partially or wholly operating this route	51, 52, 53, 71, 72 and 73	
Any differences from a current service?	Yes	
Key details of proposed service:	Weekday	Saturday
First bus start time	Various	Various
Last bus start time	Various	Various
Frequency during day	Various	Various
Seating capacity of vehicle	27	
Summary of route		
<p>The routes of the present 72 and 73 (routes G1 and G2 respectively) would operate between Nantwich and Audlem / Wrenbury only instead of continuing to Whitchurch as at present. Both would operate every two hours with no change to journeys serving Brine Leas or Malbank School . Nantwich Local Services to Cronkinson Oak, Millfields and Sainsburys will be reduced slightly.</p>		

Draft Timetable**Version for consultation****Nantwich Rural Services**

PVR

2

	Route G1 Route G2	Nantwich-Wrenbury Circular Nantwich-Wrenbury Circular				SCD	SSH	
Monday-Saturday	SCD	SSH				SCD	SSH	
Nantwich Bus Station	0745	0805	0905	1105	1305	1505	1505	1705
Malbank School						1515		
Acton Church						1520		
Swanley						1522		
Nantwich Millfields	0750	0810	0910	1110	1310		1510	1710
Ravensmoor Farmers Arms	0753	0813	0913	1113	1313	1525	1513	1713
Sound Common Lane			0918	1118	1318		1518	1718
Aston Crossroads			0923	1123	1323		1523	1723
Wrenbury Station			0925	1125	1325	1531	1525	1725
Wrenbury Pinsley View	0756	0816	0927	1127	1327	1533	1527	1730
Wrenbury Station	0758	0818						
Aston Crossroads	0800	0820				1535		
Sound Common Lane	0807	0827				via		
Ravensmoor Farmers Arms	0812	0832	0933	1133	1333	Audlem	1533	1736
Nantwich Millfields		0835	0936	1136	1336		1536	1739
Swanley	0817							
Acton Church	0819							
Malbank School	0824							
Nantwich Bus Station	0833	0840	0941	1141	1341	1615	1541	1744

Route G3 Nantwich-Audlem Circular

Monday-Saturday	SCD	SSH					SCD	SSH	
Nantwich Bus Station	0750	0750	0845	0945	1145	1345	1515	1515	1705
Nantwich, Railway Station	0754	0754	0849	0949	1149	1349	1519	1519	1709
Brine Leas School							1522		
Hankelow, White Lion PH	0806	0806	0901	1001	1201	1401	1534	1531	1721
Buerton, Festival Avenue			0906	1006	1206	1406			1726
Audlem, St James Church	0811	0811	0911	1011	1211	1411	1539	1536	1731
Buerton, Festival Avenue	0816	0816					1544	1541	
Hankelow, White Lion PH	0821	0821	0916	1016	1216	1416	1549	1546	1736
Brine Leas School	0830								
Nantwich, Railway Station	0833	0833	0928	1028	1228	1428	1601	1558	1748
Malbank School	0840								
Nantwich Bus Station	0848	0837	0932	1032	1232	1432	1605	1602	1753

Nantwich-Wrenbury-Aston-Audlem-Nantwich**Schooldays Only**

Wrenbury Pinsley View	0756	Nantwich Bus Station	1505
Wrenbury Station	0758	Malbank School	1515
Aston Crossroads	0800	Acton Church	1520
Ravensmoor Farmers Arms	0812	Swanley	1522
Swanley	0817	Ravensmoor Farmers Arms	1525
Acton Church	0819	Wrenbury Pinsley View	1531
Malbank School	0824	Wrenbury Station	1533
Nantwich Bus Station	0833	Aston Crossroads	1535
		Burleydam, Combermere Arms PH	1540
		Lightwood Green	1543
		Audlem, St James Church	1547
		Buerton, Festival Avenue	1552
		Hankelow, White Lion PH	1557
		Nantwich Bus Station	1613

Route G4**Nantwich - Cronkinson Oak - Delamere Road - Nantwich****Mondays to Saturdays**

Nantwich, Bus Station	1000	1100	1300	1400	1610
Nantwich, Railway Station	1004	1104	1304	1404	1614
Cronkinson Oak	1006	1106	1306	1406	1616
Delamere Road	1013	1113	1313	1413	1623
Bishop Wood	1015	1115	1315	1415	1625
The Pike	1018	1118	1318	1418	1628
Nantwich, Railway Station	1022	1122	1322	1422	1632
Nantwich, Bus Station	1028	1128	1328	1428	1638

Route G5**Nantwich - Brereton Drive - Sainsburys - Davenport Avenue - Nantwich****Mondays to Saturdays**

Nantwich, Bus Station	0945	1045	1245	1345	1445
Brereton Drive	0948	1048	1248	1348	1448
Sainsburys Supermarket	0951	1051	1251	1351	1451

Davenport Avenue	0954	1054	1254	1354	1454
Nantwich, Bus Station	0959	1059	1259	1359	1459

Route G6

Nantwich-Millfields

Nantwich, Bus Station	1030	1230	1430	1630
Millfields Marsh Lane	1035	1235	1435	1635
Millfields Queens Drive	1037	1237	1437	1637
Nantwich, Bus Station	1043	1243	1443	1643

Codes	SCD	Schooldays
	SSH	Saturdays and Schoolholidays

Route Descriptions

Route Descriptions

Route G1

AM Journey

Nantwich Road, Pinsley View, Sandfield Avenue, Nantwich Road, Station Road, Wrenbury Road, Whitchurch Road, Sound, Wrenbury Heath Road, Ravensmoor, Swanley Lane, Tally Ho Lane, Monks Lane, Chester Road, Waterlode, Malbank School Waterlode, Swine Market, Beam Street, Nantwich Bus Station

PM Journey

PM Journey

Afternoon journey: Nantwich Bus Station, Market Street, Beam Street, Oat Market, High Street, Water Lode, Malbank School, Water Lode, Station Road, Wrenbury Road, Whitchurch Road, Stafford Street, Cheshire Street, Audlem Square, Stafford Street, Woore Road, Windmill Lane, Longhill Lane, Audlem Road, Broad Lane, Audlem Road, Wellington Road, Water Lode, High Street, Swine Market, Beam Street, Nantwich Bus Station

Route G2

Nantwich Bus Station, Beam Street, Oat Market, High Street, Welsh Row, Queens Drive, Marsh Lane, Baddiley Lane, Wrenbury Heath Road, Sound, Whitchurch Road, Wrenbury Road, Station Road, Nantwich Road, Sandfield Avenue, Pinsley View, Nantwich Road, Baddiley Lane, Marsh Lane, Queens

Route G3

Nantwich (Bus Station), Beam Street, Oat Market, High Street, Water Lode, Wellington Road, Audlem Road, Broad Lane, A529, Hankelow Long Hill, Windmill Lane, Buerton, Woore Road, Stafford Street, Audlem, The Square, Cheshire Street, Audlem Road, Wellington Road, Water Lode, High Street, Certain journeys operate direct between Audlem The Square and Hankelow Green via Cheshire Street and Audlem Road

Certain journeys divert between Water Lode and High Street via Water Lode to serve Malbank School

Route G4

Nantwich (Bus Station), Beam Street, Oat Market, High Street, Water Lode, Wellington Road, Station View, Cronkinson Oak (turn), Station View, Wellington

Route G5

Nantwich (Bus Station), Beam Street, Manor Road, Manor Road North, Vauxhall Road, Barony Road, Middlewich Road, Whitehouse Lane, Ray Avenue,

Route G6

Nantwich Bus Station, Beam Street, Oat Market, Welsh Row, Queens Drive, Millfields, Marsh Lane, Queens Drive, Welsh Row, Swine Market, Beam Street, Nantwich Bus Station

Seating Capacity

27

Cheshire East Supported Bus Services Review

Preferred Option Bus Network Pro-forma

Route reference number	H	
Status	For consultation	
Locations linked by service	Congleton-Bromley Estate; Congleton-Mossley; Congleton-Buglawton	
Peak Vehicle Requirement of Route	2	
Current service(s) partially or wholly operating this route	90, 91, 92	
Any differences from a current service?	None	
Key details of proposed service:	Weekday	Saturday
First bus start time	0753, 0805, 0815	0753, 0805, 0815
Last bus start time	1735, 1745, 1753	1735, 1745, 1753
Frequency during day	Half hourly	Half hourly
Seating capacity of vehicle	27	
Summary of route		
No changes to route or timetables of current 90, 91 and 92 services planned.		

Draft Timetable

Version for consultation

Route H1 Congleton-Bromley Estate

PVR

2

Monday-Saturday

Congleton Fairground	0805	0835	0905	0935	and	05	35	until	1605	1635	1705	1735
Bromley Estate	0812	0842	0912	0942	at	12	42		1612	1642	1712	1742
Congleton Fairground	0820	0850	0920	0950		20	50		1620	1650	1720	1750

Route H2 Congleton-Mossley

Monday-Saturday

Congleton Fairground	0753	0823	0853		23	53		1623	1653	1723	1753
Leek Road	0758	0828	0858	and	28	58	until	1628	1658	1728	1758
Mossley Corner	0800	0830	0900	at	30	00		1630	1700	1730	1800
Cross Lane	0803	0833	0903		33	03		1633	1703	1733	1803
Falmouth Road	0804	0834	0904		34	04		1634	1704	1734	1804
Congleton Fairground	0813	0843	0913		43	13		1643	1713	1743	1813

Route H3 Congleton-Buglawton

Monday-Saturday

Congleton Fairground	0815	0845	0915	0945		15	45		1615	1645	1715	1745
Buglawton St Johns Road Co Op	0822	0852	0822	0952	and	22	52	until	1622	1652	1722	1752
Buglawton Harvey Road	0823	0853	0923	0953	at	23	53		1623	1653	1723	1753
Buglawton St Johns Road Co Op	0825	0855	0925	0955		25	55		1625	1655	1725	1755
Congleton Fairground	0833	0903	0933	1003		33	03		1633	1703	1733	1803

Route Descriptions

Route H1

Congleton Fairground (Bus Station), Market Street, High Street, Lawton Street, Bromley Road, Borough Road, Coronation Road, Fern Crescent, Burns Road, Wollston Road, Edinburgh Road, Festival Hill, Bromley Road, Park Lane, Mountbatten Way, Market Street, Congleton Fairground

Route H2

Congleton Fairground (Bus Station), Market Street, High Street, High Street, Albert Place, Canal Street, Canal Road, Leek Road, Boundary Lane, Biddulph Road, Cross Lane, Leek Road, Canal Road. Astbury Lane Ends, Lenthall Avenue, Linksway, Falmouth Road, Lambert's Lane, Canal Road, Canal Street, Albert Place, High Street, Market Street, Congleton Fairground (Bus Station)

Route H3

Congleton Fairground (Bus Station), Market Street, Mountbatten Way, Moor Street, Brook Street, Buxton Road, St. Johns Road, Wharfedale Road, Harvey Road, St. Johns Road, Buxton Road, Brook Street, Moor Street, Mountbatten Way, Market Street, Congleton Fairground

Seating Capacity

27

Appendix 4

Bus Service Review – Communications Plan

Project Name:	Bus Service Review
Project Sponsor	Frank Jordan
Project Director	Andrew Ross
Portfolio Holder	Cllr David Brown
Project Manager	Rob Minton
Date:	26/04/17
Distribution:	Inclusion as Cabinet report appendix
Purpose of this document:	To define all parties interested in the project and to define the means and frequency of communication between them.

Overarching Messages

A large proportion of the bus network in Cheshire East is operated commercially and the remaining is financially supported by the Council. The Council provides revenue support to provide local bus services which would not otherwise be provided by commercial operators. The Council's objectives for subsidising bus services are set out below and have been adopted in the bus service review process:

- Provide passenger services for residents most in need to enable access to essential services, including health, education, employment, retail and leisure;
- Provide bus services which maximise value for money and deliver an effective and efficient network of supported bus services;
- Increase usage of the bus network;
- Provide a balanced and equitable network of supported bus services which complements the commercial network; and
- Provide supported bus services which are affordable within the Council's budget from 2018/19 onwards and are financially sustainable.

The supported bus network has not been reviewed in detail for a number of years. A review has been beneficial to assess whether these supported services are best meeting the needs of residents and whether network adjustments are required.

The review has also allowed the Council the opportunity to assess how to maximise the benefits from the resources available for the supported bus network. As part of the medium term budget plan for the Council, a saving of £1.576m from the supported bus budget is proposed to commence from 1st April 2018.

Considerations

- The strategic approach of the Council towards finding savings from the wider budget has been clearly communicated through the pre-budget report and budget setting process.
- Need to clearly communicate the importance of understanding the impacts associated with the proposed network.
- The Council needs to communicate effectively during the consultation and project a synchronised message coordinated with the Council's democratic process.

Risks

- Reputational risk – Reductions to local bus services will attract adverse public and/or political comments from affected users – it is an emotive subject and often receives a significant backlash from users and residents.
- Equity risks – elderly people and young people are disproportionately reliant on supported local bus services. An Equality Impact Assessment has been drafted highlighting the impacts on protected groups, which will be developed during the consultation.
- Lack of public understanding on the scope of the consultation, particularly the difference between commercial and council supported services.

Project Messages

Cheshire East wide messages:

- CEC needs to make significant revenue budget savings as a result of reducing funding from central government.
- A large proportion of the bus network in Cheshire East is operated commercially and these are not under review as part of this process.
- CEC are engaging with stakeholders and the public to consult on the proposals in an equitable and transparent way.
- The project is looking to ensure the future supported bus network is affordable within the Council's budget from 2018/19 onwards and financially sustainable
- CEC are keen to listen to resident's views and opinions.
- Encouraging as many residents as possible to take part.
- The results of the consultation will inform and influence the bus service review.

Key Milestones	Owner / lead	Deadline
Prepare key messages, FAQs and consultation material	Rob Minton / Michael Moore	9 th May 2017
Cabinet meeting and approval to consult	Frank Jordan	Cabinet Meeting 9 th May 2017
Consultation period	Rob Minton	18 th May to 26 th July 2017 (10 weeks)
Drop-in sessions / focus groups	Rob Minton / Phil Christian / Michael Moore	TBC
Publish consultation summary	Rob Minton	September 2017
Develop recommendations & Cabinet Report	Project Board	August to November
Cabinet meeting	Frank Jordan	7 th November 2017
Communicate decision regarding service changes to public	Rob Minton / Michael Moore	After decision taken by Cabinet
Contract notice period / new tender process	Transport Service Solutions (TSS)	4 months
Implementation date	TSS	1 st April 2018

Communications Plan Overview

Stakeholder	Information Required	Frequency	Method
Media	Media will need information to help explain the process and timescales.	Key milestones within the programme	Media releases, statements, media briefing(s), interviews, council reports, Twitter, Facebook, website
Bus Operators	How the proposed changes will affect their operations and consultation on options to provide services efficiently	Continuous.	Meetings with operators
Bus Users (particularly key groups identified within equality impact assessment e.g. disabled people, older people and those in rural areas)	How to participate in consultation and key information on which they can form opinions. Information on decisions which are made regarding service changes and how this will affect journeys.	During consultation, updates as required post consultation.	Survey (paper and online), posters on buses and within bus stations, specific webpage on CEC website, media releases, statements, interviews, council reports, Twitter, Facebook
General Public (including non-	How to participate in consultation and key	During consultation,	Survey (paper and online), posters on

bus users)	information on which they can form opinions	updates as required post consultation.	buses and within bus stations, specific webpage on CEC website, media releases, statements, interviews, council reports, Twitter, Facebook
Elected representatives	The legal and democratic pathway the project will follow. Risks to CEC corporate strategic priorities. Updates on progress.	Ahead of formal reports going to Cabinet or full Council Before announcements are made about consultation or service alternations	Member briefings (verbal and written), media releases, council reports, Team Voice, website, align with statutory consultation for pre-budget setting process, social media
Town and parish councils	Updates on progress and impacts on their local communities of service reductions.	Key milestones Before public announcements	Letters, emails, presentations, media coverage, website, align with statutory consultation for pre-budget setting process, social media
Partner organisations and volunteers	Will need to consider impact of the service reductions on partner organisations and volunteers who provide passenger services.	During and post consultation	Letters, emails, presentations, media coverage, website, align with statutory consultation for pre-budget setting process, social media
Schools	How to participate in consultation and key information on which they can form opinions	During and post consultation	Letters, emails, presentations, media coverage, website, align with statutory consultation for pre-budget setting process, schools bulletin
Employer organisations	How to participate in consultation and key information on which they can form opinions	During and post consultation	Letters, emails, presentations, media coverage, website, align with statutory consultation for pre-budget setting process social media

			(inc LinkedIn)
Neighbouring Local Authorities	Information regarding how proposed service reductions would affect cross boundary travel and their own bus network	During and post consultation	Informal meetings and formal invitation to participate in consultation

Stakeholder Analysis

Who is impacted? (the audience)	How are they impacted?	Communication objectives
Bus Passengers – in particular people without access to private cars living in rural areas	– Reduction or removal of services may mean lack of access to jobs, services and amenities	<ul style="list-style-type: none"> – Seek to engage with individuals to understand their needs and implement services reductions which still provide an acceptable level of accessibility. – Be clear about the need to achieve reduction in budgets. – Provide clear timescales for consultation. – Provide clear information as part of consultation so people can make informed opinions. – Reach out to widest possible range of current bus users. – Identify potential mitigation measures
General Public (including non bus users)	<ul style="list-style-type: none"> – Reduction or removal of travel options to access jobs, services and amenities – Fair application of methodology that best meets current needs and future vision within available means 	<ul style="list-style-type: none"> – Be clear about the need to achieve reduction in budgets. – Provide clear timescales for consultation. – Provide clear information as part of consultation so people can make informed opinions. – Reach out to widest possible range of general public.
Bus Operators	– Reduction in revenue of operators may put additional pressure on businesses	<ul style="list-style-type: none"> – Clear communication of information in a timely manner – Maintain a good working relationship with operators
Politicians 1. MPs 2. Cabinet, especially Highways and Infrastructure	– Residents may be dissatisfied with approach and recommendations for service reductions in their area	– Ensure kept informed and consult appropriately to take into account their views and feedback they have received from residents

Portfolio Holder 3. Members 4. Town & Parish Councils		
Press / Media 1. Local 2. National	– Likely to be intense public interest and scrutiny in the Council's approach to consultation and service reductions	– Be clear about the need to achieve reduction in budgets – Be honest and transparent with communications – Provide regular updates regardless of progress made – Provide upfront announcement of major changes to scope/timelines
Employer Organisations (including Chamber of Commerce and Skills and Growth Company)	– Service reductions may result in reduced accessibility to employment sites and possible issues for staff retention/recruitment	– Be clear about the need to achieve reduction in budgets – Provide timely and accurate information which evidences the scales of issues – Work with Skills and Growth Company and Chamber of Commerce to manage communications with employers
Schools	– Pupils currently use bus services to access education sites and service reductions may affect levels of accessibility.	– Echo overarching communications messages – Make clear that where services are withdrawn, pupils for whom Cheshire East Council have a statutory obligation to provide home to school travel will be eligible for free transport to school.
Older people and people who are disabled	– Reduction or removal of services could result in increased social isolation and loss of access to services and amenities	– Seek to engage with individuals to understand their needs and implement services reductions which still provide a level of accessibility. – Be clear about the need to achieve reduction in budgets. – Provide clear timescales for consultation. – Provide clear information as part of consultation so people can make informed opinions.

Appendix 5

Cheshire East Bus Service Review Appendix
REFERENCE CASE

	Route	Days Operated		Weighted Scores			Contract Index out of 100
			Service Type	LTP Priorities	Accessibility	Financial	
Highest scoring services included within Reference Case Option	51/52/53 72/73 Nantwich - Whitchurch/Locals	Mondays to Saturdays	All day	5.6	7.20	2.75	86.47
	77 Congleton - Mow Cop - Kidsgrove	Mondays to Saturdays	All day	6.3	7.20	2	86.19
	319 Sandbach - Holmes Chapel - Goostrey	Mondays to Fridays	All day	6.3	7.20	1.75	84.80
	Beartown Network	Monday to Saturday	All day	6.3	5.66	3	83.17
	42 Crewe - Congleton	Mondays to Saturdays	All day	6.3	6.17	2.25	81.86
	32 Sandbach - Crewe	Mondays to Saturdays	All day	4.9	7.20	2.5	81.18
	39 Nantwich -Wybunbury - Crewe	Monday - Saturday	All day	5.6	7.20	1.75	80.91
	88 Knutsford - Wilmslow - Altrincham	Mondays to Saturdays	All day	5.6	5.14	3.75	80.59
	60/63/64 Glossop - Macclesfield	Mondays to Saturdays	All day	5.6	5.14	3.5	79.20
Lower scoring services not included within Reference Case Option	289 Northwich - Knutsford - Altrincham	Mondays to Saturdays	All day	6.3	6.17	1.75	79.08
	38 Macclesfield - Crewe (evenings	Mondays to Saturdays	Eve	4.9	7.20	2	78.40
	99 Congleton - Macclesfield	Monday to Friday infill	Infill	5.6	6.17	2.25	77.97
	58 Bakewell - Buxton - Macclesfield	Mondays to Saturdays	All day	5.6	5.14	3.25	77.81
	315 Congleton - Rode Heath	Monday to Saturday	All day	5.25	7.20	1.5	77.57
	Nantwich Rural Services	Mondays to Saturdays	All day	4.2	7.20	2.5	77.29
	8 Sydney - Crewe - Wistaston (Sunday Service & PH)	Sundays	Sun	5.6	6.17	2	76.58
	Flexible Transport (Little Bus)	Mondays to Fridays	Flexible Trans	5.25	6.69	1.75	76.10
	14/45A Crewe - Sydney/Marshfield	Mondays to Saturdays	Infill	6.3	4.63	2.75	76.06
	19 Macclesfield - Prestbury	Mondays to Saturdays	All day	4.9	6.17	2.5	75.46
	27 Macclesfield - Knutsford	Mondays to Saturdays	Infill	4.9	6.17	2.25	74.07
	11 Macclesfield - Bollington	Mondays to Saturdays	All day	4.9	5.66	2.5	72.60
	1 Crewe - Nantwich	Sundays	Sun	4.2	6.17	2.5	71.57
	130 Macclesfield - Manchester	Sundays	Infill	4.9	5.14	2.75	71.13
	200 Wilmslow - Manchester Airport	Monday to Sunday	All day	4.9	5.14	2.75	71.13
	392/3 Macclesfield - Poynton - Stockport	Mondays to Saturdays	All day	4.9	5.14	2.75	71.13
	6 Shavington - Leighton Hospital	Sundays	Sun	5.6	5.14	2	70.86
	300 Knutsford Town Service	Saturdays	All day	4.9	5.66	2	69.82
	37 Sandbach- Winsford	Monday to Saturday Evening	Eve	4.9	5.14	2.5	69.74
	SB1-3 Sandbach Town Services	Monday to Friday	All day	3.85	4.63	3.75	68.00
	38 Crewe - Macclefield	Sundays	Infill	4.2	6.17	1.75	67.40
	P1 Poynton - Hazel Grove	Mondays to Saturdays	All day	4.2	4.63	3	65.77
	6 Shavington - Leighton Hospital	Monday - Saturday Eve	Eve	5.6	5.14	1	65.30
	35 Altrincham - Warrington	Mondays to Saturdays	All day	3.85	4.63	3.25	65.22
	300 Knutsford - Longridge Circular	Mondays to Saturday evenngs	Eve	3.15	7.20	1.25	64.50
	78 Nantwich - Alsager	Saturdays	Sat	2.8	7.20	1.5	63.95
	5/6 Macclesfield - Weston Estate	Sundays	Sun	4.2	4.63	2.25	61.60
	8/9 Crewe Wistaston/Sydney	Late afternoon/evening Saturdays	Infill	5.6	4.63	0.75	61.05
	31 Crewe - Winsford	Mondays to Saturday	Eve	4.2	5.14	1.5	60.29
	47 High Leigh - Warrington	Tuesdays and Fridays	All day	2.45	5.14	3	58.90
	78 Nantwich - Alsager	Mondays to Fridays	Infill	3.5	5.14	1.75	57.79
	9/10 Macclefield - Moss Rose/Bollington	Friday & Saturday Evenings	F & S Eve	3.15	4.12	2.5	54.29
	Crewe Flexirider	Mondays to Fridays	Flexible Trans	2.45	4.63	1.25	46.31
	9/10 Macclefield - Moss Rose/Bollington	Sundays and Public Holiday Evenings	SUN & PH eve	3.15	4.12	1	45.95

*Flexible Transport (Little Bus) has been assumed to be reduced proportionally in line with the reduction to scheduled supported bus services)

Appendix 6

Appendix - Bus Service Review Project Plan	2017/18												2018/19		
	Q1			Q2			Q3			Q4			Q1		
	Apr	May	June	Jul	Aug	Sep	Oct	Nov	Dec	Jan	Feb	Mar	Apr	May	June
GOVERNANCE															
Project Board meetings (monthly)															
Consultation															
Develop consultation material & questionnaire for approval															
10 week consultation period															
Analysis of Consultation Responses & Develop Cabinet Recommendations															
Headline consultation results															
Full consultation analysis															
Develop recommendations for Cabinet on proposed changes & mitigation															
November Cabinet decision															
Mitigation Strategy															
Develop mitigation strategy															
Develop and deliver mitigation measures															
Implementation															
New tender process															
Statutory bus service registration periods															
Implementation date - 1st April 2018															

Appendix 7

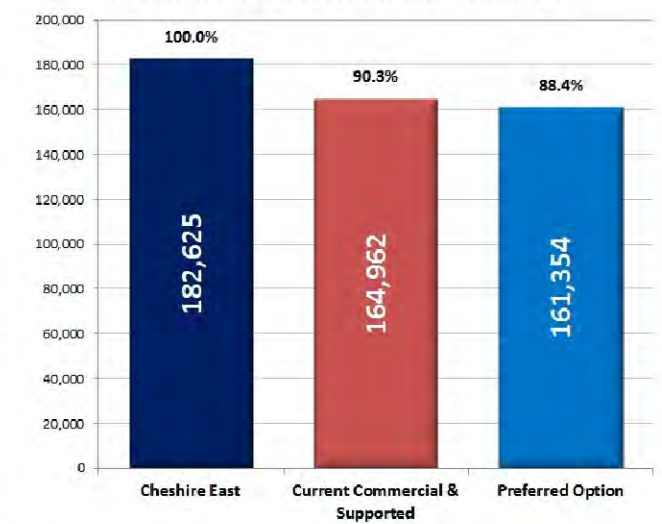


Bus Services Review Project

AM Peak

Areas within 400 metres of a bus stop which is within 60 minutes public transport travel time of a Key Service Centre or Principal Town

Residential Addresses Served - AM Peak



KEY

- No longer within 400m – areas currently within 400m of a bus or rail service which would no longer be within 400m of a bus or rail service with the Preferred option in place
- Now within 400m – areas currently not within 400m of a bus or rail service which would be within 400m of a bus or rail service with the Preferred option in place
- No change – areas currently within 400m of a bus or rail service which would continue to be within 400m of a bus or rail service with the Preferred option in place
- Cheshire East Borough
- Key Service Centres and Principal Towns

Change in bus accessibility as a result of implementation of Preferred Option – AM Peak

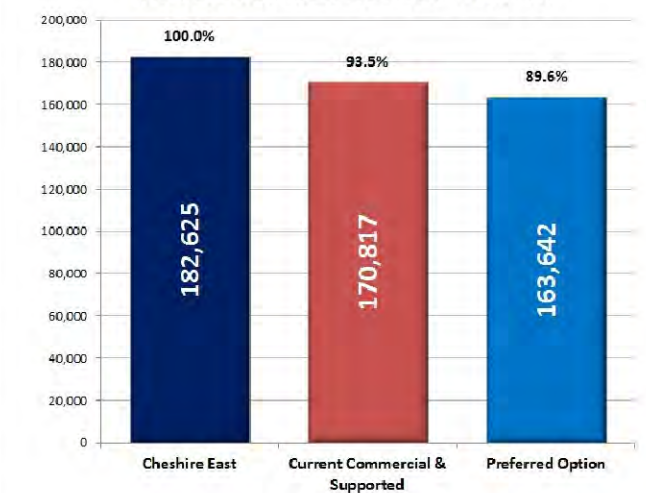


Bus Services Review Project

Daytime Off Peak

Areas within 400 metres of a bus stop which is within 60 minutes public transport travel time of a Key Service Centre or Principal Town

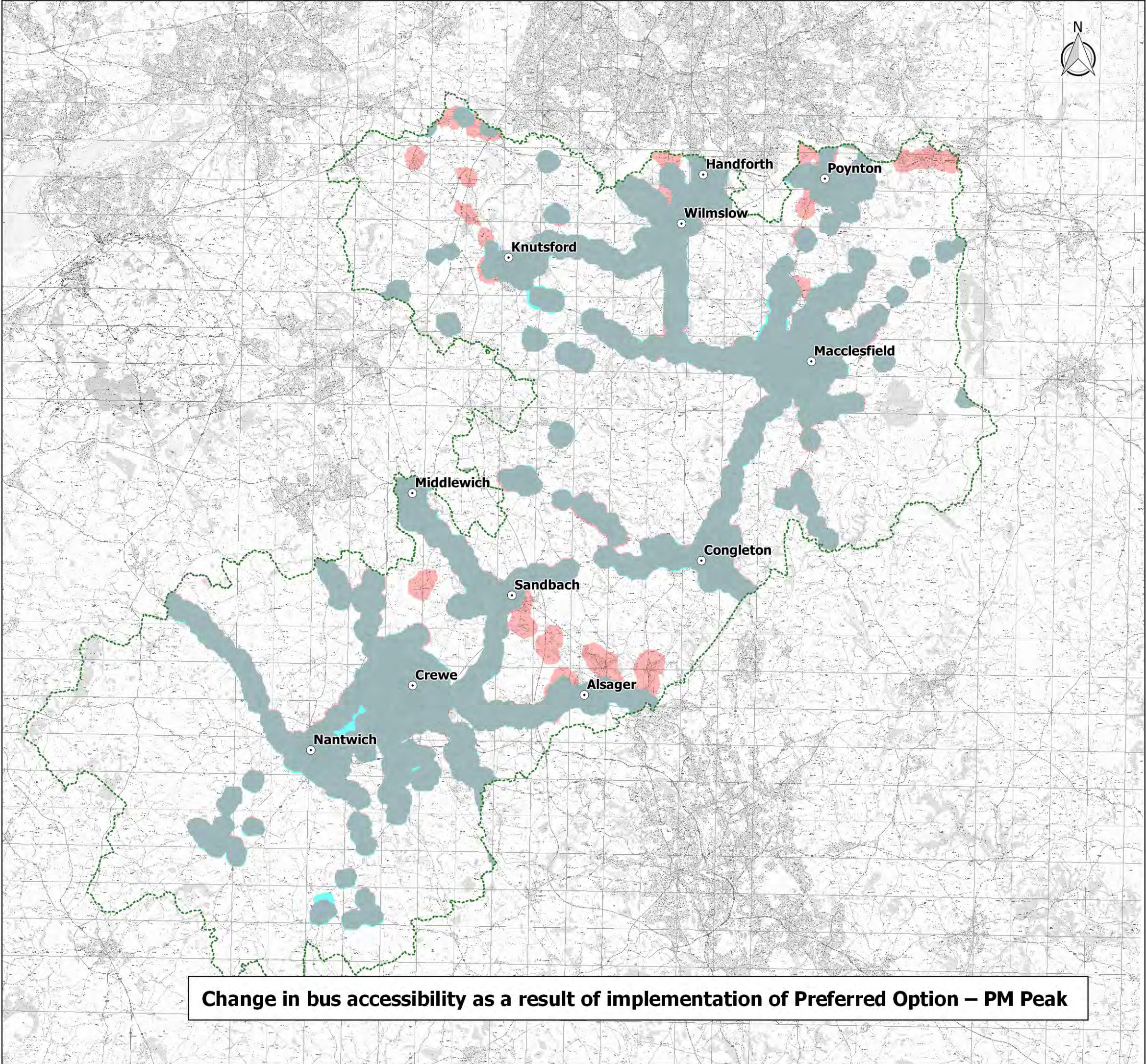
Residential Addresses Served - Off Peak



KEY

- No longer within 400m – areas currently within 400m of a bus or rail service which would no longer be within 400m of a bus or rail service with the Preferred option in place
- Now within 400m – areas currently not within 400m of a bus or rail service which would be within 400m of a bus or rail service with the Preferred option in place
- No change – areas currently within 400m of a bus or rail service which would continue to be within 400m of a bus or rail service with the Preferred option in place
- Cheshire East Borough
- Key Service Centres and Principal Towns

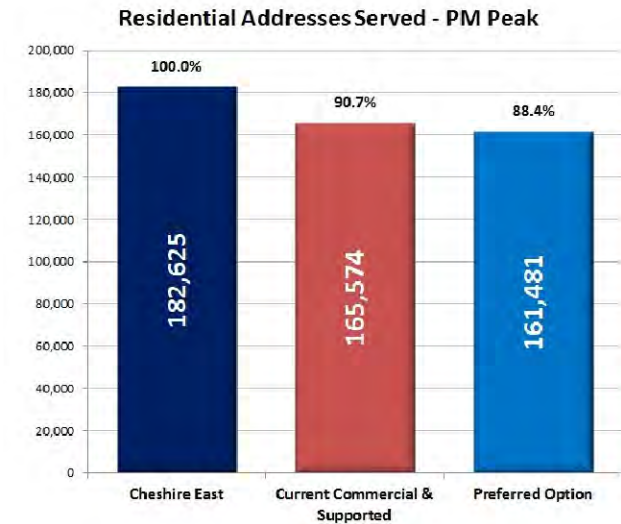
Change in bus accessibility as a result of implementation of Preferred Option – Off Peak



Bus Services Review Project

PM Peak

Areas within 400 metres of a bus stop which is within 60 minutes public transport travel time of a Key Service Centre or Principal Town



- KEY**
- No longer within 400m – areas currently within 400m of a bus or rail service which would no longer be within 400m of a bus or rail service with the Preferred option in place
 - Now within 400m – areas currently not within 400m of a bus or rail service which would be within 400m of a bus or rail service with the Preferred option in place
 - No change – areas currently within 400m of a bus or rail service which would continue to be within 400m of a bus or rail service with the Preferred option in place
 - Cheshire East Borough
 - Key Service Centres and Principal Towns

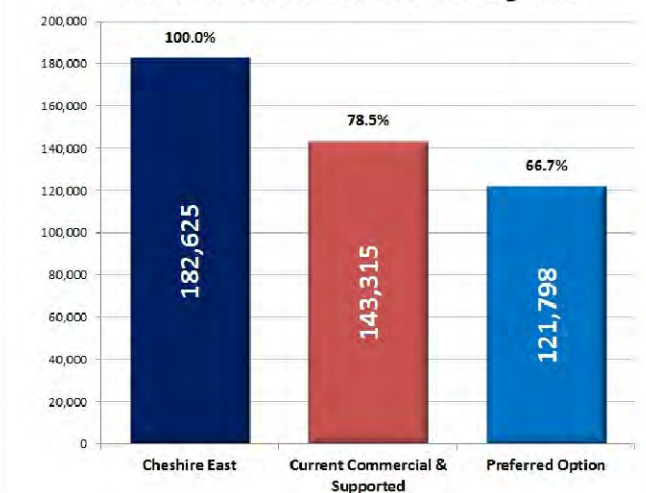


Bus Services Review Project

Evening

Areas within 400 metres of a bus stop which is within 60 minutes public transport travel time of a Key Service Centre or Principal Town

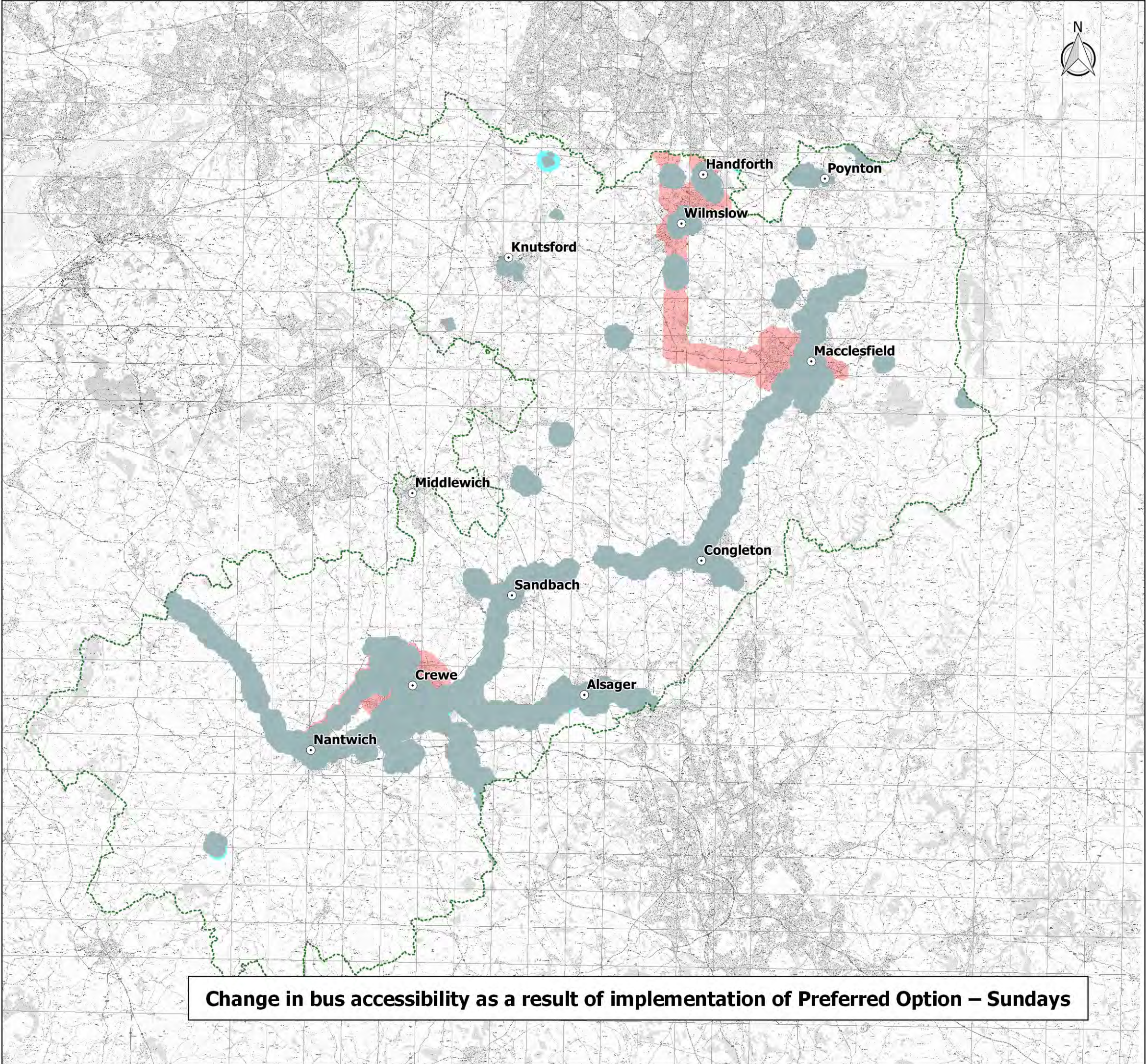
Residential Addresses Served - Evening Peak



KEY

- No longer within 400m – areas currently within 400m of a bus or rail service which would no longer be within 400m of a bus or rail service with the Preferred option in place
- Now within 400m – areas currently not within 400m of a bus or rail service which would be within 400m of a bus or rail service with the Preferred option in place
- No change – areas currently within 400m of a bus or rail service which would continue to be within 400m of a bus or rail service with the Preferred option in place
- Cheshire East Borough
- Key Service Centres and Principal Towns

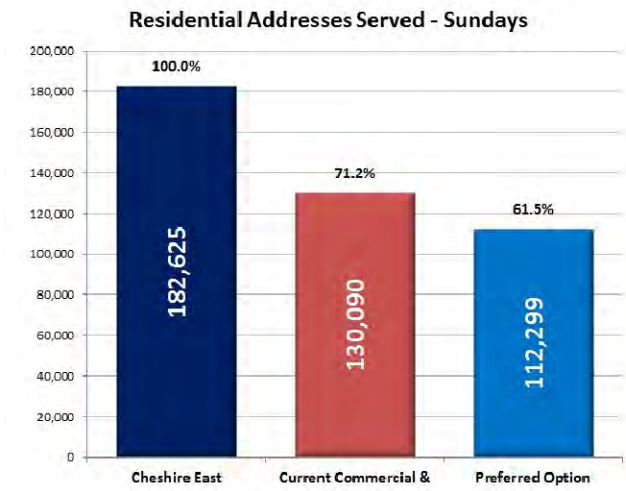
Change in bus accessibility as a result of implementation of Preferred Option – Weekday Evening Peak



Bus Services Review Project

Sunday

Areas within 400 metres of a bus stop which is within 60 minutes bus travel time of a Key Service Centre or Principal Town



- KEY**
- No longer within 400m – areas currently within 400m of a bus or rail service which would no longer be within 400m of a bus or rail service with the Preferred option in place
 - Now within 400m – areas currently not within 400m of a bus or rail service which would be within 400m of a bus or rail service with the Preferred option in place
 - No change – areas currently within 400m of a bus or rail service which would continue to be within 400m of a bus or rail service with the Preferred option in place
 - Cheshire East Borough
 - Key Service Centres and Principal Towns